



Price list
of standard modules
StandardLine – C3



Speed
Dismantlability
Transferability
Industrial look
Cost effectiveness

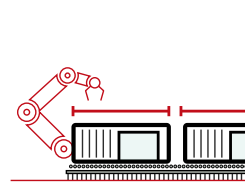
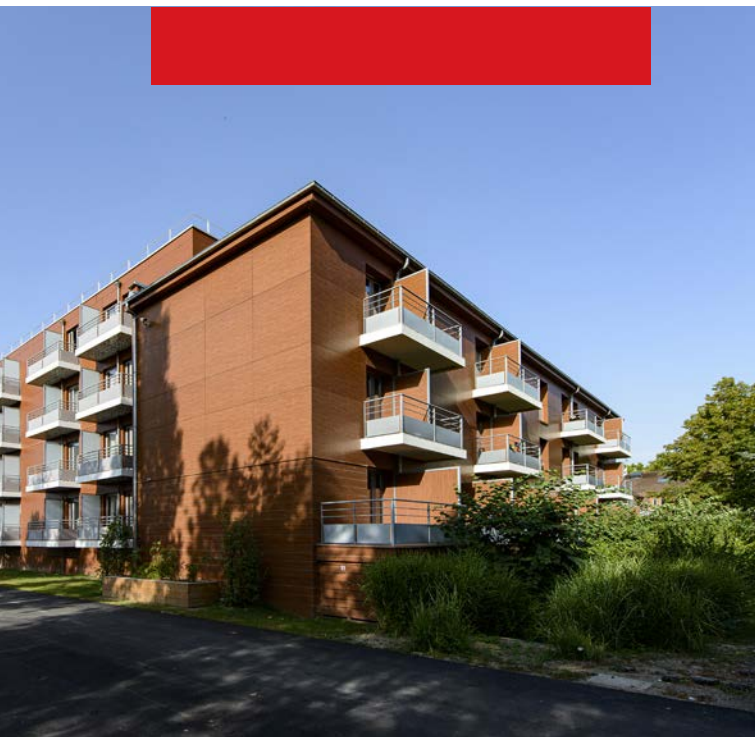
We are the holder of certificates:

- PAVUS
- ISO 14001:2015
- ISO 9001:2015
- ETA 15/0119
- LGA
- AQAP 2110



- Do you need a space for business, housing, teaching, sport, etc. In a timely fashion, which is easily disassembled as well as moveable?
- Are you satisfied with a container look that can be altered with a secondary façade?
- Do you prefer rapid construction and price above all?
- Then the ideal solution is our top-selling line...

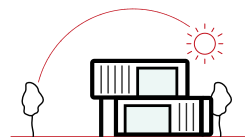
StandardLine



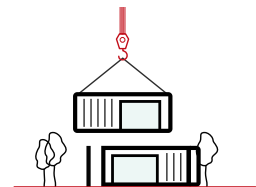
Line quality



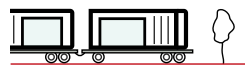
Fixed price



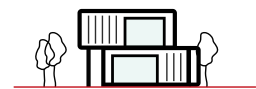
Speed



Disassemblability



Flexibility

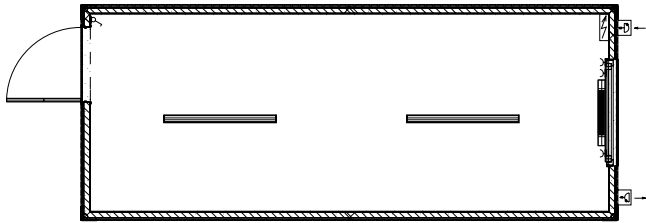


Environmental protection

Price list valid from 1st April 2024

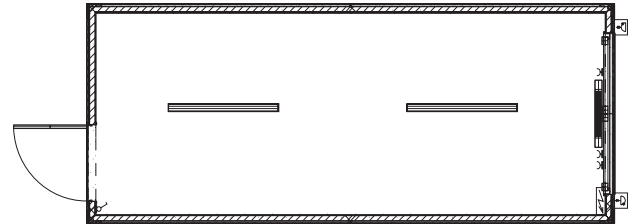
- The **prices** stated **apply to standard modules** with basic insulation and equipment.
- For solutions that go beyond the standard, we will be happy to prepare **a tailor-made calculation** according to the customer's specifications.

C3L 99



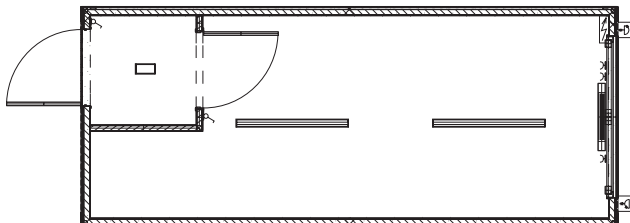
Dimensions	6 058 × 2 438 mm clearance 2 500 mm
Walls and roof	Melamine chipboard
Floor	PVC (1.5 mm thick)
Windows	1× 1200 × 1200 mm, plastic, open/pop-up, ditherm glass, no window blind
Entrance door	1× ZK 875 × 2 000 mm, both sides coated, insulated
Wiring	2× lights 1× 36 W 3× inner sockets 220 V 1× heater AEG 2 kW Fuse box 2× el. supply 380 V-in-out
Sanitary fittings	–
Stackability	3×
Price	€ 7,940

C3L 01



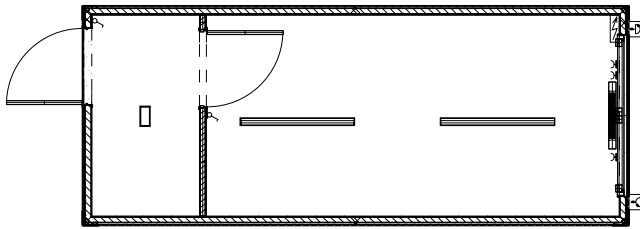
Dimensions	6 058 × 2 438 mm clearance 2 500 mm
Walls and roof	Melamine chipboard
Floor	PVC (1.5 mm thick)
Windows	1× 1 765 × 1 335 mm, plastic, open/pop-up, ditherm glass, blind – plastic, integrated, with safety stoppers
Entrance door	1× ZK 875 × 2 000 mm, both sides coated, insulated
Wiring	2× lights 1× 36 W 3× inner sockets 220 V 1× heater AEG 2 kW Fuse box 2× el. supply 380 V-in-out
Sanitary fittings	–
Stackability	3×
Price	€ 8,300

C3L 02



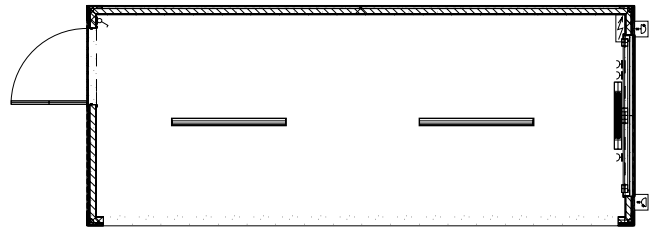
Dimensions	6 058 × 2 438 mm clearance 2 500 mm
Walls and roof	Melamine chipboard
Floor	PVC (1.5 mm thick)
Windows	1× 1 765 × 1 335 mm, plastic, open/pop-up, ditherm glass, blind – plastic, integrated, with safety stoppers
Entrance door	1× ZK 875 × 2 000 mm, both sides coated, insulated
Wiring	2× lights 1× 36 W 1× light 1× 9 W 3× inner sockets 220 V 1× heater AEG 2 kW Fuse box 2× el. supply 380 V-in-out
Sanitary fittings	–
Stackability	3×
Price	€ 8,960

C3L 03



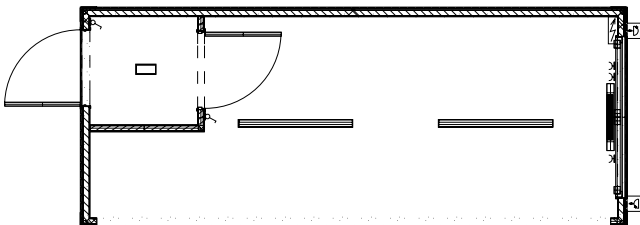
Dimensions	6 058 × 2 438 mm clearance 2 500 mm
Walls and roof	Melamine chipboard
Floor	PVC (1.5 mm thick)
Windows	1× 1 765 × 1 335 mm, plastic, open/pop-up, ditherm glass, blind – plastic, integrated, with safety stoppers
Entrance door	1× ZK 875 × 2 000 mm, both sides coated, insulated
Wiring	2× lights 1× 36 W 1× light 1× 9 W 3× inner sockets 220 V 1× heater AEG 2 kW Fuse box 2× el. supply 380 V-in-out
Sanitary fittings	–
Stackability	3×
Price	€ 8,980

C3L 04



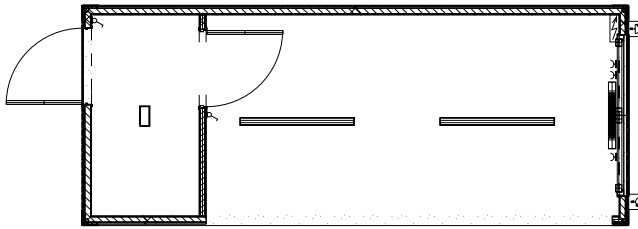
Dimensions	6 058 × 2 438 mm clearance 2 500 mm
Walls and roof	Melamine chipboard
Floor	PVC (1.5 mm thick)
Windows	1× 1 765 × 1 335 mm, plastic, open/pop-up, ditherm glass, blind – plastic, integrated, with safety stoppers
Entrance door	1× ZK 875 × 2 000 mm, both sides coated, insulated
Wiring	2× lights 1× 36 W 3× inner sockets 220 V 1× heater AEG 2 kW Fuse box 2× el. supply 380 V-in-out
Sanitary fittings	–
Stackability	3×
Price	€ 7,610

C3L 05



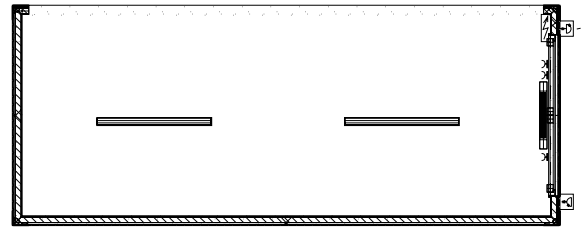
Dimensions	6 058 × 2 438 mm clearance 2 500 mm
Walls and roof	Melamine chipboard
Floor	PVC (1.5 mm thick)
Windows	1× 1 765 × 1 335 mm, plastic, open/pop-up, ditherm glass, blind – plastic, integrated, with safety stoppers
Entrance door	1× ZK 875 × 2 000 mm, both sides coated, insulated
Wiring	2× lights 1× 36 W 1× light 1× 9 W 3× inner sockets 220 V 1× heater AEG 2 kW Fuse box 2× el. supply 380 V-in-out
Sanitary fittings	–
Stackability	3×
Price	€ 8,280

C3L 06



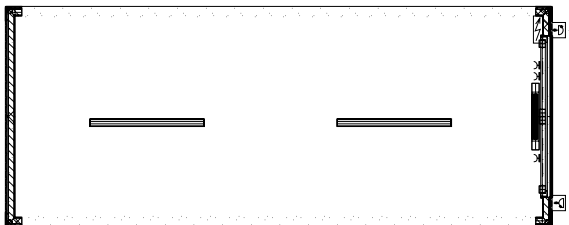
Dimensions	6 058 × 2 438 mm clearance 2 500 mm
Walls and roof	Melamine chipboard
Floor	PVC (1.5 mm thick)
Windows	1× 1 765 × 1 335 mm, plastic, open/pop-up, ditherm glass, blind – plastic, integrated, with safety stoppers
Entrance door	1× ZK 875 × 2 000 mm, both sides coated, insulated
Wiring	2× lights 1× 36 W 1× light 1× 9 W 3× inner sockets 220 V 1× heater AEG 2 kW Fuse box 2× el. supply 380 V-in-out
Sanitary fittings	–
Stackability	3×
Price	€ 8,420

C3L 07



Dimensions	6 058 × 2 438 mm clearance 2 500 mm
Walls and roof	Melamine chipboard
Floor	PVC (1.5 mm thick)
Windows	1× 1 765 × 1 335 mm, plastic, open/pop-up, ditherm glass, blind – plastic, integrated, with safety stoppers
Entrance door	–
Wiring	2× lights 1× 36 W 3× inner sockets 220 V 1× heater AEG 2 kW Fuse box 2× el. supply 380 V-in-out
Sanitary fittings	–
Stackability	3×
Price	€ 7,280

C3L 08



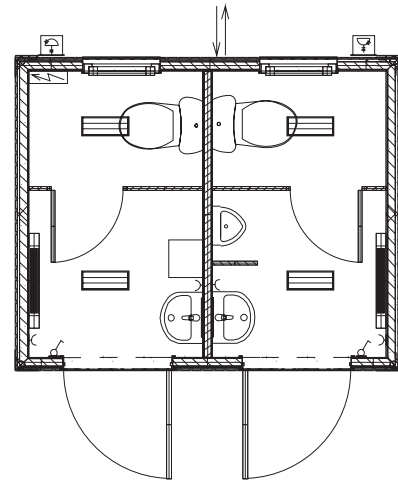
Dimensions	6 058 × 2 438 mm clearance 2 500 mm
Walls and roof	Melamine chipboard
Floor	PVC (1.5 mm thick)
Windows	1× 1 765 × 1 335 mm, plastic, open/pop-up, ditherm glass, blind – plastic, integrated, with safety stoppers
Entrance door	–
Wiring	2× lights 1× 36 W 3× inner sockets 220 V 1× heater AEG 2 kW Fuse box 2× el. supply 380 V-in-out
Sanitary fittings	–
Stackability	3×
Price	€ 6,760

Sanitary units C3S

hot-dip galvanized steel frame

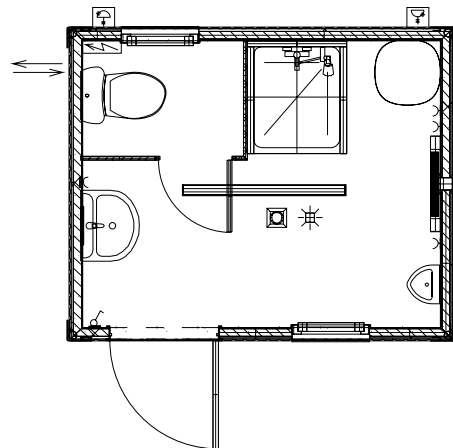
C3S 01

Dimensions	2 990 × 2 438 mm clearance 2 500 mm
Walls and roof	Melamine chipboard
Floor	PVC (1.5 mm thick)
Windows	2× 600 × 450 mm, plastic, pop-up, ditherm glass, no window blind
Entrance door	2× ZK 875 × 2 000 mm, both sides coated, insulated
Wiring	4× lights 1× 9 W 4× inner sockets 220 V 2× heater AEG 1 kW Fuse box 2× el. supply 380 V-in-out
Sanitary fittings	2× WC units 1× urinal 2× wash basins (CW) 1× protecting board
Stackability	3×
Price	€ 10,060



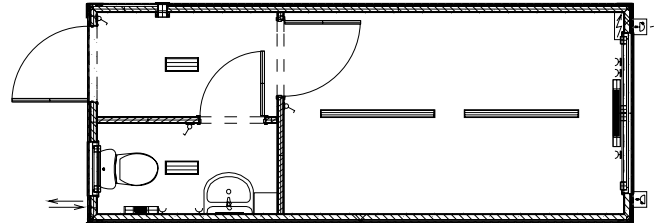
C3S 02

Dimensions	2 990 × 2 438 mm clearance 2 500 mm
Walls and roof	Melamine chipboard
Floor	Waterproof anti-slip PVC (1.5 mm thick), with gully
Windows	2× 600 × 450 mm, plastic, pop-up, ditherm glass, no window blind
Entrance door	1× ZK 875 × 2 000 mm, both sides coated, insulated
Wiring	1× light 1× 36 W 4× inner sockets 220 V 1× heater AEG 1 kW Fuse box 2× el. supply 380 V-in-out 1× water heater socket 220 V 1× fan
Sanitary fittings	1× WC unit 1× urinal 1× wash basins (CW / WW) 1× shower 1× water heater 80l
Stackability	3×
Price	€ 11,200



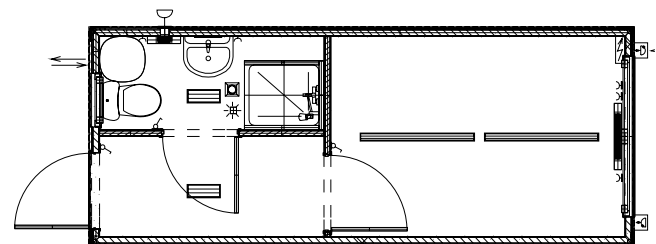
C3S 03

Dimensions	6 058 × 2 438 mm clearance 2 500 mm
Walls and roof	Melamine chipboard
Floor	PVC (1.5 mm thick)
Windows	1× 1 765 × 1 335 mm, plastic, open/pop-up, ditherm glass, blind – plastic, integrated, with safety stoppers 1× 600 × 450 mm, plastic, pop-up, ditherm glass, no window blind
Entrance door	1× ZK 875 × 2 000 mm, both sides coated, insulated
Wiring	2× lights 1× 36 W 2× lights 1× 9 W 5× inner sockets 220 V 1× heater AEG 0,5 kW 1× heater AEG 2 kW Fuse box 2× el. supply 380 V-in-out 1× fan
Sanitary fittings	1× WC unit 1× wash basin (CW)
Stackability	3×
Price	€ 11,210



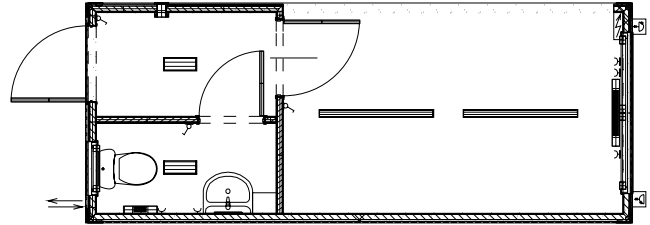
C3S 04

Dimensions	6 058 × 2 438 mm clearance 2 500 mm
Walls and roof	Melamine chipboard
Floor	PVC (1.5 mm thick) / Waterproof anti-slip PVC (1.5 mm thick), with gully
Windows	1× 1 765 × 1 335 mm, plastic, open/pop-up, ditherm glass, blind – plastic, integrated, with safety stoppers 1× 600 × 450 mm, plastic, pop-up, ditherm glass, no window blind
Entrance door	1× ZK 875 × 2 000 mm, both sides coated, insulated
Wiring	2× lights 1× 9 W 2× lights 1× 36 W 5× inner sockets 220 V 1× heater AEG 0,5 kW 1× heater AEG 2 kW Fuse box 2× el. supply 380 V-in-out 1× water heater socket 220 V 1× fan
Sanitary fittings	1× WC unit 1× wash basin (CW / WW) 1× shower 1× water heater 80l
Stackability	3×
Price	€ 14,390



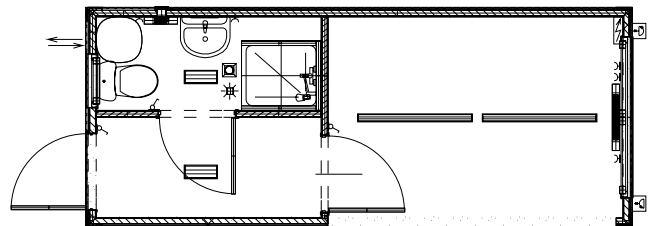
C3S 05

Dimensions	6 058 × 2 438 mm clearance 2 500 mm
Walls and roof	Melamine chipboard
Floor	PVC (1.5 mm thick)
Windows	1× 1 765 × 1 335 mm, plastic, open/pop-up, ditherm glass, blind – plastic, integrated, with safety stoppers 1× 600 × 450 mm, plastic, pop-up, ditherm glass, no window blind
Entrance door	1× ZK 875 × 2 000 mm, both sides coated, insulated
Wiring	2× lights 1× 36 W 2× lights 1× 9 W 5× inner sockets 220 V 1× heater AEG 0,5 kW 1× heater AEG 2 kW Fuse box 2× el. supply 380 V-in-out 1× fan
Sanitary fittings	1× WC unit 1× wash basin (CW)
Stackability	3×
Price	€ 10,750



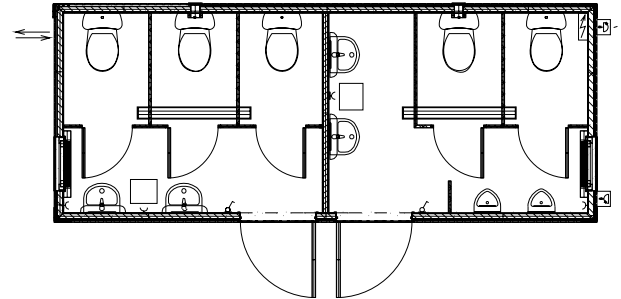
C3S 06

Dimensions	6 058 × 2 438 mm clearance 2 500 mm
Walls and roof	Melamine chipboard
Floor	PVC (1.5 mm thick) / Waterproof anti-slip PVC (1.5 mm thick), with gully
Windows	1× 1 765 × 1 335 mm, plastic, open/pop-up, ditherm glass, blind – plastic, integrated, with safety stoppers 1× 600 × 450 mm, plastic, pop-up, ditherm glass, no window blind
Entrance door	1× ZK 875 × 2 000 mm, both sides coated, insulated
Wiring	2× lights 1× 36 W 2× lights 1× 9 W 5× inner sockets 220 V 1× heater AEG 0,5 kW 1× heater AEG 2 kW Fuse box 2× el. supply 380 V-in-out 1× water heater socket 220 V 1× fan
Sanitary fittings	1× WC unit 1× wash basin (CW / WW) 1× shower 1× water heater 80l
Stackability	3×
Price	€ 13,960



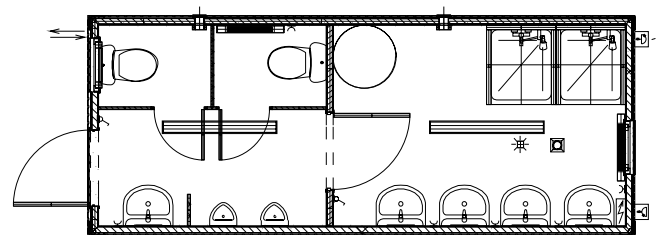
C3S 09

Dimensions	6 058 × 2 438 mm clearance 2 500 mm
Walls and roof	Melamine chipboard
Floor	PVC (1.5 mm thick)
Windows	2× 600 × 450 mm, plastic, pop-up, ditherm glass, no window blind
Entrance door	2× ZK 875 × 2 000 mm, both sides coated, insulated
Wiring	2× lights 2× 36 W 4× inner sockets 220 V 2× heaters AEG 1 kW Fuse box 2× el. supply 380 V-in-out 2× fan
Sanitary fittings	5× WC units 2× urinals 4× wash basins (CW)
Stackability	3×
Price	€ 16,760



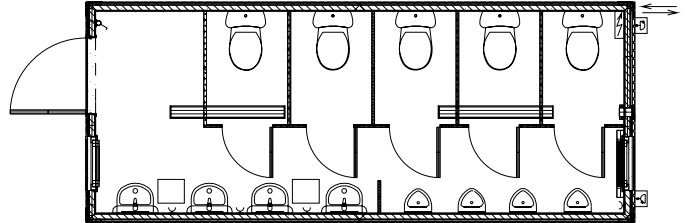
C3S 10

Dimensions	6 058 × 2 438 mm clearance 2 500 mm
Walls and roof	Melamine chipboard
Floor	Waterproof anti-slip PVC (1.5 mm thick), with gully
Windows	2× 600 × 450 mm, plastic, pop-up, ditherm glass, no window blind
Entrance door	1× ZK 875 × 2 000 mm, both sides coated, insulated
Wiring	2× lights 2× 36 W 6× inner sockets 220 V 2× heaters AEG 0,5 kW 1× heater AEG 1 kW Fuse box 2× el. supply 380 V-in-out 1× water heater socket 220 V 2× fan
Sanitary fittings	2× WC units 1× urinals 5× wash basins (CW / WW) 2× showers 1× water heater 200l 1× protecting board
Stackability	3×
Price	€ 19,460



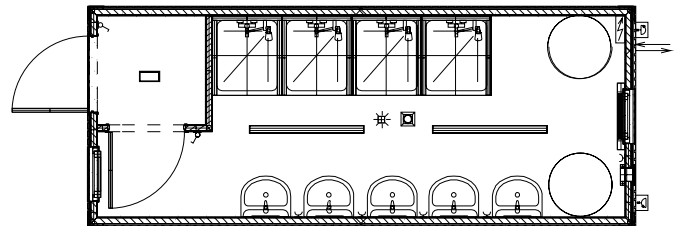
C3S 11

Dimensions	6 058 × 2 438 mm clearance 2 500 mm
Walls and roof	Melamine chipboard
Floor	PVC (1.5 mm thick)
Windows	2× 600 × 450 mm, plastic, pop-up, ditherm glass, no window blind
Entrance door	1× ZK 875 × 2 000 mm, both sides coated, insulated
Wiring	2× lights 2× 36 W 4× inner sockets 220 V 1× heater AEG 2 kW Fuse box 2× el. supply 380 V-in-out 1× fan
Sanitary fittings	5× WC units 4× urinals 4× wash basins (CW) 1× protecting board
Stackability	3×
Price	€ 16,740



C3S 12

Dimensions	6 058 × 2 438 mm clearance 2 500 mm
Walls and roof	Water-proof board SIMONA
Floor	Waterproof anti-slip PVC (1.5 mm thick), with gully
Windows	2× 600 × 450 mm, plastic, pop-up, ditherm glass, no window blind
Entrance door	1× ZK 875 × 2 000 mm, both sides coated, insulated
Wiring	1× light 1× 9 W 2× lights 1× 36 W 5× inner sockets 220 V 1× heater AEG 2 kW Fuse box 2× el. supply 380 V-in-out 2× water heater sockets 220 V 4× fan
Sanitary fittings	5× wash basins (CW / WW) 4× showers 2× water heaters 200l
Stackability	3×
Price	€ 20,110

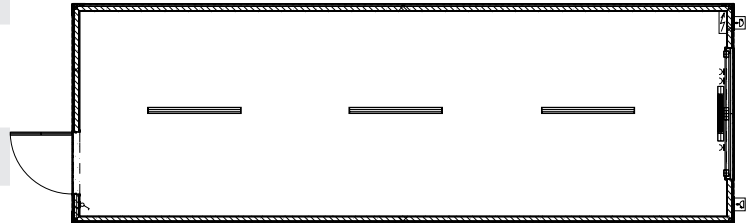


Big sized modules C3L and C3S

StandardLine

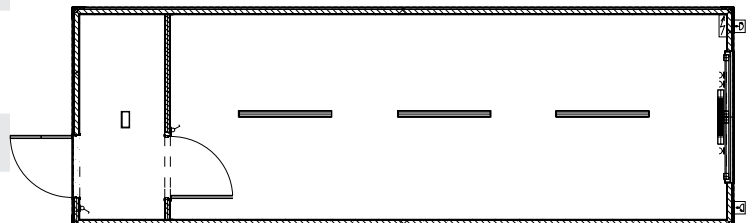
C3L 901

Dimensions	9 000 × 2 990 mm, clearance 2 500 mm
Walls and roof	Melamine chipboard
Floor	PVC (1.5 mm thick)
Windows	1× 1 765 × 1 335 mm, plastic, open/pop-up, ditherm glass, blind – plastic, integrated, with safety stoppers
Entrance door	1× ZK 875 × 2 000 mm, both sides coated, insulated
Wiring	3× lights 1× 36 W 3× inner sockets 220 V 1× heater AEG 3 kW Fuse box 2× el. supply 380 V-in-out
Sanitary fittings	–
Stackability	3×
Price	€ 11,490



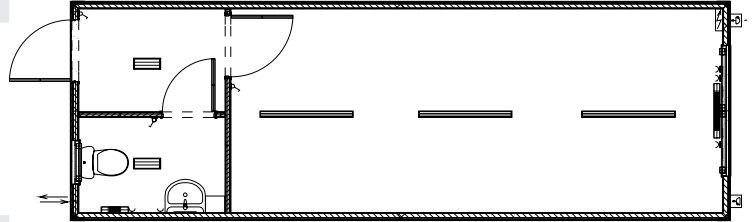
C3L 902

Dimensions	9 000 × 2 990 mm, clearance 2 500 mm
Walls and roof	Melamine chipboard
Floor	PVC (1.5 mm thick)
Windows	1× 1 765 × 1 335 mm, plastic, open/pop-up, ditherm glass, blind – plastic, integrated, with safety stoppers
Entrance door	1× ZK 875 × 2 000 mm, both sides coated, insulated
Wiring	1× light 1× 9 W 3× lights 1× 36 W 3× inner sockets 220 V 1× heater AEG 3 kW Fuse box 2× el. supply 380 V-in-out
Sanitary fittings	–
Stackability	3×
Price	€ 12,170

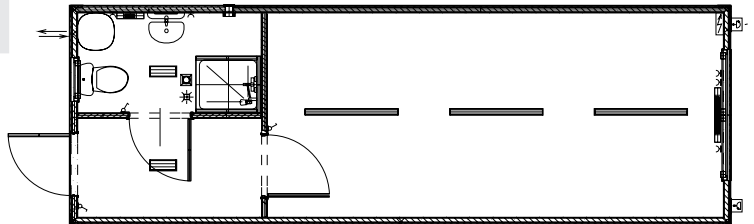


C3S 903

Dimensions	9 000 × 2 990 mm, clearance 2 500 mm
Walls and roof	Melamine chipboard
Floor	PVC (1.5 mm thick)
Windows	1× 1 765 × 1 335 mm, plastic, open/pop-up, ditherm glass, blind – plastic, integrated, with safety stoppers 1× 600 × 450 mm, plastic, pop-up, ditherm glass, no window blind
Entrance door	1× ZK 875 × 2 000 mm, both sides coated, insulated
Wiring	2× lights 1× 9 W 3× lights 1× 36 W 5× inner sockets 220 V 1× heater AEG 0,5 kW 1× heater AEG 3 kW Fuse box 2× el. supply 380 V-in-out 1× fan
Sanitary fittings	1× WC unit 1× wash basin (CW)
Stackability	3×
Price	€ 14,400

**C3S 904**

Dimensions	9 000 × 2 990 mm, clearance 2 500 mm
Walls and roof	Melamine chipboard
Floor	PVC (1.5 mm thick) / Waterproof anti-slip PVC (1.5 mm thick), with gully
Windows	1× 1 765 × 1 335 mm, plastic, open/pop-up, ditherm glass, blind – plastic, integrated, with safety stoppers 1× 600 × 450 mm, plastic, pop-up, ditherm glass, no window blind
Entrance door	1× ZK 875 × 2 000 mm, both sides coated, insulated
Wiring	2× lights 1× 9 W 3× lights 1× 36 W 5× inner sockets 220 V 1× heater AEG 0,5 kW 1× heater AEG 3 kW Fuse box 2× el. supply 380 V-in-out 1× water heater socket 220 V 1× fan
Sanitary fittings	1× WC unit 1× wash basin (CW / WW) 1× shower 1× water heater 80l
Stackability	3×
Price	€ 17,380

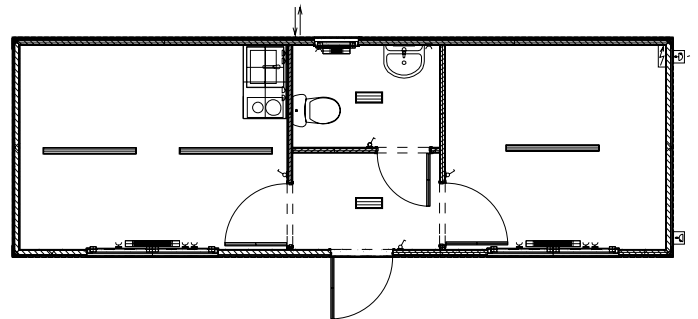


Big sized modules C3L and C3S

StandardLine

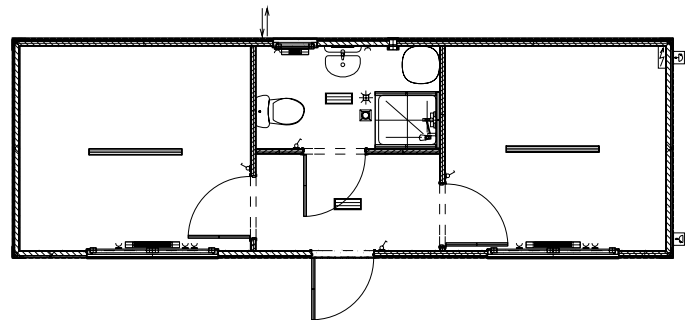
C3S 907

Dimensions	9 000 × 2 990 mm, clearance 2 500 mm
Walls and roof	Melamine chipboard
Floor	PVC (1.5 mm thick)
Windows	2× 1 765 × 1 335 mm, plastic, open/pop-up, ditherm glass, blind – plastic, integrated, with safety stoppers 1× 600 × 450 mm, plastic, pop-up, ditherm glass, no window blind
Entrance door	1× ZK 875 × 2 000 mm, both sides coated, insulated
Wiring	2× lights 1× 9 W 3× lights 1× 36 W 8× inner sockets 220 V 1× heater AEG 0,5 kW 2× heaters AEG 2 kW Fuse box 2× el. supply 380 V-in-out 1× water heater socket 220V
Sanitary fittings	1× WC unit 1× wash basins (CW) 1× kitchen (sink CW/WW); 5l water heater, fridge, 2× cooker
Stackability	3×
Price	€ 17,670



C3S 908

Dimensions	9 000 × 2 990 mm, clearance 2 500 mm
Walls and roof	Melamine chipboard
Floor	PVC (1.5 mm thick) / Waterproof anti-slip PVC (1.5 mm thick), with gully
Windows	2× 1 765 × 1 335 mm, plastic, open/pop-up, ditherm glass, blind – plastic, integrated, with safety stoppers 1× 600 × 450 mm, plastic, pop-up, ditherm glass, no window blind
Entrance door	1× ZK 875 × 2 000 mm, both sides coated, insulated
Wiring	2× lights 1× 9 W 2× lights 1× 36 W 8× inner sockets 220 V 1× heater AEG 0,5 kW 2× heaters AEG 1 kW Fuse box 2× el. supply 380 V-in-out 1× water heater socket 220V 1× fan
Sanitary fittings	1× WC unit 1× wash basin (CW / WW) 1× shower 1× water heater 80l
Stackability	3×
Price	€ 18,960



General Business Terms and Conditions

1. Delivery

1.1 The Supplier reserves the right to change the price or payment terms and/or to claim extra costs in the event that the details regarding the subject-matter of the contract are not clear and thereupon the Supplier may not perform delivery in the agreed manner (e.g. unconfirmed specifications, missing information for necessary technical solutions to the subject-matter of the contract, missing documents for customs clearance, missing documents for assembly approval, etc.) or in the event that the Customer is in delay of payment or unilaterally suspends, postpones or cancels delivery of the subject-matter of the contract. All work performed at the date of such suspension, postponement, or cancellation, and all related additional costs (also future costs, e.g. storage costs, handling, etc.) shall be immediately reimbursed by the Customer.

1.2 Furthermore, the Supplier may reject the changes requested by the Customer in the event that they are not feasible with respect to the progress of the operations, or as the case may be, if the Customer rejects the increased price of the Supplier for changes.

1.3 The Customer undertakes to accept the goods properly and pay the price stipulated according to the payment terms to the Supplier. The title to the goods remains with the Supplier until the price for such goods is fully settled by the Customer.

1.4 In the case of a failure to accept the subject-matter of the contract or delay in the supply longer than 2 calendar weeks, the contractual price must be paid immediately. Besides this, all additional costs associated with storage and maintenance of the containers up to the time of actual delivery shall be reimbursed by the Customer.

1.5 With the delivery, the Customer shall receive a notice stating the number of containers and serial numbers thereof. At the Customer's own expense, the Customer shall order a crane to be available for the period of unloading and the time necessary for the assembly work. The Customer shall furthermore ensure paved road access for trucks and assembly vehicles for the full time necessary for unloading and assembly, as well as free access for the assembly workers to the assembly site.

1.6 The Customer is obliged to make a prompt inspection of the goods delivered and record all visible defects in writing on the delivery note or on the acceptance certificate, and claim such defects to the Supplier no later than within 2 working days after delivery, or, if appropriate, after the acceptance procedure; all latent defects ascertained at any time later must be claimed within 2 working days after being detected. After the expiration of these time limits no claims shall be admitted.

1.7 If the assembly work is ordered to be performed by the Supplier, it terminates at the outer edge of the subject-matter of the contract. All connections, tests and inspections for implementation shall be the Customer's responsibility. In the case that this work is not undertaken in the presence of the Supplier's workers, but only after their departure, the Supplier shall be entitled to charge to the Customer any extra costs for repeated visits to the assembly site (e.g. travel expenses, accommodation costs, daily allowances, etc.) if defects are discovered thereafter.

1.8 If the assembly is performed by the Supplier, the Customer shall provide the Supplier with all documents necessary to obtain working permits in a timely manner and at Customer's expense, as well as with all reasonable cooperation necessary for the actual performance of the assembly work (e.g. building permit, proper foundations, ground connections, all necessary connections of power, water, gas, digital networks sewage, waste disposal, scaffolding, working and social facilities, amenities such as 380 V and 220 V power supply, water piping connections, WC, etc.).

1.9 In the case that the Customer fails to fulfill requirements stated in sections 1.5 and 1.8 for the actual delivery and assembly and such failure results in any extra costs to the Supplier, the Supplier shall be entitled to charge the respective costs to the Customer.

1.10 Without the Supplier's prior consent, the Customer's employees or any third persons are prohibited from working at the assembly site during assembly of the containers. Otherwise the Supplier shall be entitled to charge the Customer for all extra costs that may arise in relation to extended time necessary for the assembly.

1.11 After the Supplier's assembly workers complete the assembly, the Customer shall arrange, within the stipulated time and in cooperation with the Supplier's workers and the Customer's client, an acceptance procedure and sign the acceptance certificate stating all defects detected. In the case that the Customer, or, as the case may be, the Customer's client fails to meet the scheduled time limitations, and unless otherwise agreed by and between the Supplier and the Customer, the Supplier shall be entitled to claim all extra costs

according to sentence 3 of section 1.7. If the detected defects specified in the certificate cannot be rectified on site, the parties shall agree on the manner and the time in which the defects are to be rectified. After the expiration of the stipulated time, only rectified defects shall be accepted which have been recorded in the certificate.

1.12 The parties agree that defects ascertained during the delivery or the acceptance procedure that do not affect the usage of the subject-matter of delivery, shall not constitute the Customer's right not to remit payment of the contractual price. The Customer shall be entitled to withhold payment for the period of time required to complete the repair work related to defects provided, however, that the amount of such payment does not exceed 5% of the contractual price. After rectification of the defects the Customer shall pay the remainder of the contractual price immediately.

2. Technical Documents

2.1 The Supplier shall provide the Customer, at the Customer's request and without any charge, with the following documents:

- Ground plan (floor plan)
- Plan of foundations without static calculation
- Electrical plans

2.2 Other documents requested by the Customer will be provided by the Supplier only where possible for the Supplier. These documents shall be charged to the Customer, if not otherwise agreed with the Customer.

3. Warranty

3.1 The warranty for the subject-matter of the contract is 24 months from the date of delivery.

3.2 All other parts, devices and built-in components are covered by the warranty of the respective manufacturer, which shall not exceed two years following the delivery date.

3.3 The Supplier shall not be liable for any damages or defects caused by the following:

- improper handling of the subject-matter of the contract
- improper installation by the Customer or a third person authorized by the Customer
- improper care or maintenance
- non-compliance with the operation manual
- vandalism
- force majeure

3.4 The Supplier shall not be liable for any damages caused by latent defects originating from the following:

- improperly prepared foundations
- unventilated foundations (the air does not circulate under the container(s))
- increased air humidity in the subject-matter of the contract (the relative air humidity may not exceed 50%)
- causes stated in section 3.3

3.5 The Customer shall make available all documents as might be necessary for defects claimed to the Supplier. These specifically include reservations to the delivery recorded in the delivery note, photos of the reported defect, etc. In the case that the documents handed over from the Customer are not clear, and unless otherwise agreed between the Customer and the Supplier, the defects will be assessed by the Supplier on site. If the claim is unjustified, the Customer shall be charged all costs related the travel to the place of delivery.

3.6 Without the Supplier's consent, the Customer may not rectify the defects. If the defects are to be rectified by the Customer, such repairs must be approved by the Supplier (e.g. cost estimates, technical solution, etc.). Otherwise the costs of repairs shall be rejected by the Supplier.

3.7 The warranty for repair work performed by the Customer as well as the warranty for damages caused by such repairs shall be assumed by the Customer.

3.8 In the case of claims, where the Parties fail to reach an agreement upon the cause, the Parties shall agree ad hoc upon the method of rectification as well as the coverage of costs thus incurred. All unjustified claims or repair work that are not covered by the warranty shall be undertaken by the Supplier on the basis of a new contract.

4. Final Provisions

4.1 The Parties shall do their best to resolve all discrepancies that may arise herefrom by mutual agreement. It is agreed that Czech law shall apply, place of jurisdiction shall appertain to Zlín.

In Vizovice on

In / on

KOMA MODULAR s.r.o.

Customer

Price list valid from **1st April to 30th June 2024**.
The prices are indicative only and may be changed according to the current market situation.

info@koma-modular.cz
tel.: +420 577 007 711
fax: +420 577 452 837

Examples of realized modular building objects



◀ Dining hall for employees,
Vizovice, CZ



Expansion of the School in Prague CZ ▶



◀ Czech Pavilion
at the World
EXPO – Milan,
Italy





Pop-up Gallery, Račice, CZ ▶



**Extension of the Mining Hospital
in Karviná CZ** ▶



◀ **Modular Airport,
Saint-Louis, Senegal**



info@koma-modular.cz
www.koma-modular.cz