



## TECHNICAL DESCRIPTION

Number of modules	1
Type of modules	StandardLine
Dimensions of modules	6,058x2,990 mm
Area	18 m <sup>2</sup>
Internal height	2,500 mm
Length of manufacture	1 week
Length of assembly	1 day
Windows	Plastic frames, double glazing
External doors	MZ
Interior – walls	Plywood covered with high-pressure laminate (RESPATEX), sanitary partitions, suspended ceiling from aluminium segments
Interior - floors	Tiles
Facade	Painted zinc-coated sheetmetal
Heating	Electric heaters
Fire resistance	-
Equipment	Luxurious furnishings, audio equipment, video equipment

## Description

Sanitation containers are, in a way, a separate category of the KOMA system. The luxurious VIP Sanitary Modules were produced for TOI TOI & DIXI of the ADCO Group.

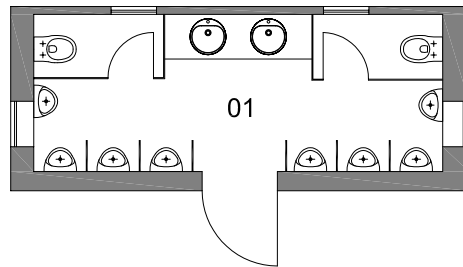
Besides luxurious sanitary furnishings, there are also MP3 media players and air-conditioning.

TOI TOI & DIXI of the ADCO Group have offices worldwide and these premium modules are rented for cultural or sport events – in short, anywhere mobility and luxury are required by customers.

### PremiumLine for TOI TOI & DIXI of the ADCO Group

Site location	worldwide
Implementation date	since 2012
The delivery included:	-
The delivery didn't include:	-

## FOR MEN

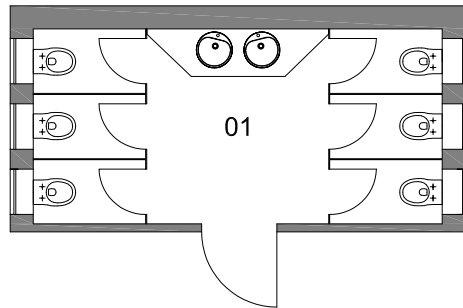


LEGEND

01	TOILETS - MEN
----	---------------



## FOR WOMEN

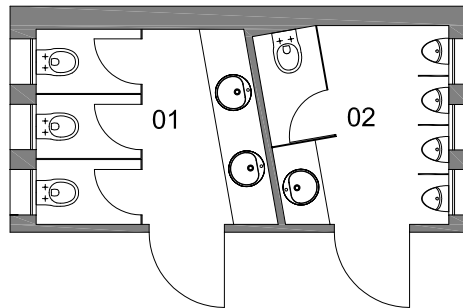


LEGEND

01	TOILETS - WOMEN
----	-----------------



## FOR WOMEN AND MEN



LEGEND

01	TOILETS - WOMEN
02	TOILETS - MEN

