



## TECHNICAL DESCRIPTION

Number of children	120
Number of classrooms	4
Number of modules	36
Type of modules	StandardLine
Area	640 m <sup>2</sup>
Internal height	3 m
Length of manufacture	2 weeks
Length of assembly	4 weeks
Windows	Plastic frames, double glazing, exterior blinds
External doors	Plastic frames
Interior – walls	Gypsum fibreboard with painting, ceramic tiles in bathrooms
Interior - floors	PVC, tiles in bathrooms
Facade	Coloured plaster coat
Heating	Teplovodní plynové topení
Fire resistance	30 min., non-flammable construction system DP1
Equipment	Liff for disabled persons

## Description

A two-storey annex building of a primary school with 4 spacious, well-illuminated classrooms fulfilling all hygienic requirements. It includes soundproof insulation between neighbouring classrooms and in the ceilings.

It includes changing rooms, lavatories and wheelchairs accessible lavatories. The school was built in cooperation with the Pradast building company, who provided finishing work on our basic building. The whole modular building is fitted with thermal insulation and plastering. Architectonical design: Czech Develop, and project documentation: AXON design studio

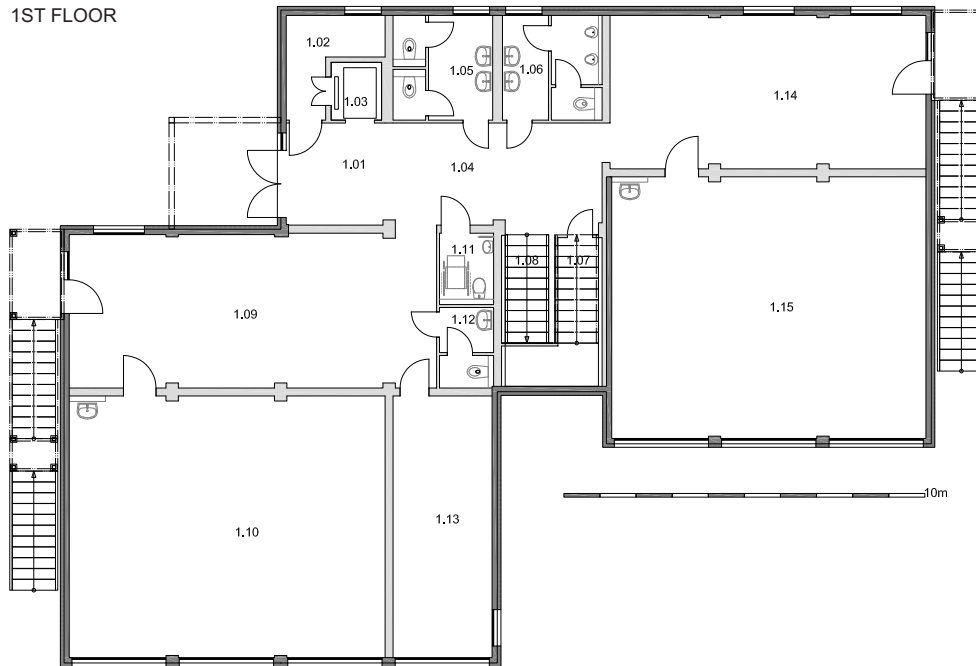
## PRIMARY SCHOOL JANDUSŮ

Site location	nám. bratří Jandusů 2/38, Prague 22 Uhřetěves, Czech Republic
Implementation date	June 2013
The delivery included:	Basic building
The delivery didn't include:	-

# Four-class Annex Building of a Primary School

# KOMA

1ST FLOOR

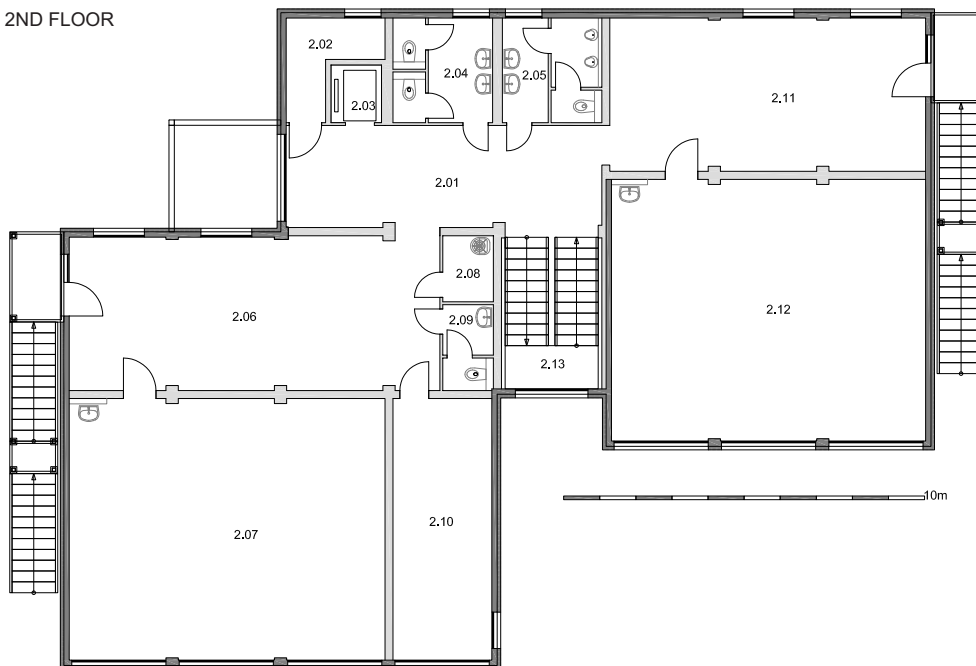


LEGEND - 1ST FLOOR

1.01	ENTRANCE HALL
1.02	UTILITY ROOM
1.03	LIFT
1.04	HALL
1.05	TOILETS - GIRLS
1.06	TOILETS - BOYS
1.07	STOREROOM
1.08	STAIRS
1.09	CHANGING-ROOM
1.10	CLASSROOM
1.11	TOILETS - DISABLED
1.12	TOILETS - STAFF
1.13	OFFICE
1.14	CHANGING-ROOM
1.15	CLASSROOM

REMARK:  
INNER PARTITIONS AND DOORS,  
DISTRIBUTION MAINS AND  
SANITARY INSTALLATIONS WERE  
NOT INCLUDED IN THE KOMA  
SCOPE OF SUPPLY.

2ND FLOOR



LEGEND - 2ND FLOOR

2.01	HALL
2.02	UTILITY ROOM
2.03	LIFT
2.04	TOILETS - GIRLS
2.05	TOILETS - BOYS
2.06	CHANGING-ROOM
2.07	CLASSROOM
2.08	CLEANING ROOM
2.09	TOILETS - STAFF
2.10	OFFICE
2.11	CHANGING-ROOM
2.12	CLASSROOM
2.13	STAIRS

REMARK:  
INNER PARTITIONS AND DOORS,  
DISTRIBUTION MAINS AND  
SANITARY INSTALLATIONS WERE  
NOT INCLUDED IN THE KOMA  
SCOPE OF SUPPLY.

