



TECHNICAL DESCRIPTION

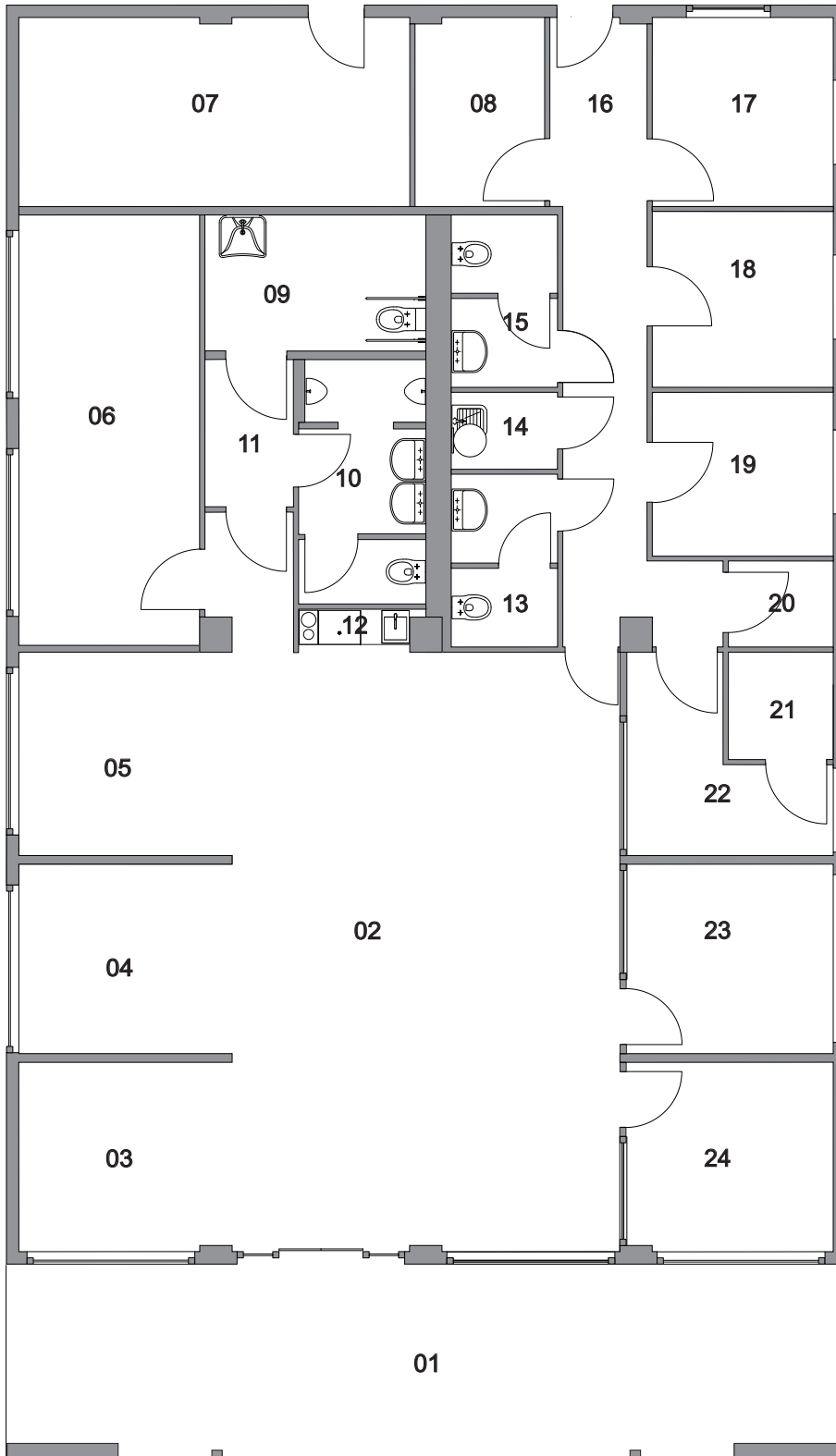
Number of modules	8
Type of modules	StandardLine
Dimensions of modules	9.000x2.990x3.485 mm
Area	216 m ²
Internal height	3,000 mm
Length of manufacture	2 days
Length of assembly	1 week
Windows	Plastic frames, double glazing, laminated safety glass
External doors	Automatic sliding door, plastic frames door
Interior – walls	Gypsum fibreboard with painting, ceramic tiles in sanitary rooms, glazed partition walls
Interior - floors	Ceramic tiles in meeting and sanitary rooms, carpet in offices, PVC in auxiliary rooms
Facade	Debond façade
Heating	Electric heaters
Fire resistance	30 min., DP3 flammable construction system
Equipment	Cleaning zone at the entrance, kitchen

Description

KOMA has built an administrative building for the Ostrava used car dealership, ESA. The client had decided on the modular KOMA system because it is the fastest type of construction available. Besides that, the structure is not permanently bound to any particular location. The used car lot can easily move if necessary. The building is made up of 8 large-format modules, which allowed the interior to be free of columns. The total floor area of the building is 216 sq. meters. The dominant feature of the building, which is fitted with a secondary aluminum Debond facade, is the AUTO ESA sign.

Auto ESA Used Car Mart

Site location	Ostrava, U Stadionu, Czech Republic
Implementation date	May 2014
The delivery included:	Supply of upper building.
The delivery didn't include:	Predecessor activities.



LEGEND

01	ENTRANCE
02	LOUNGE
03	SALES OFFICE
04	SALES OFFICE
05	SALES OFFICE
06	MEETING ROOM
07	KEY CLOSET
08	STOREROOM
09	WC WOMAN+ DIS.
10	WC MAN
11	LAVATORY ENTRY
12	KITCHEN
13	WC
14	CLEANING ROOM
15	WC
16	HALL
17	TECHNICIAN
18	CHANGING ROOM
19	DAY ROOM
20	SERVER ROOM
21	SAFE
22	CASH DESK
23	MANAGER OFFICE
24	OFFICE



10m