



TECHNICAL DESCRIPTION

Number of children	350
Number of classrooms	14
Number of modules	48
Type of modules	StandardLine
Area	972 m ²
Internal height	2.850 mm
Length of manufacture	4 weeks
Length of assembly	4 weeks
Windows	Plastic frames, double glazing, exterior aluminium blinds
External doors	Plastic frames, double glazing,
Interior – walls	Melamine chipboard
Interior - floors	PVC
Facade	Horizontal corrugated steel sheets
Heating	Hot water heating
Fire resistance	-
Equipment	External stairs made from hot-dip galvanized steel

Description

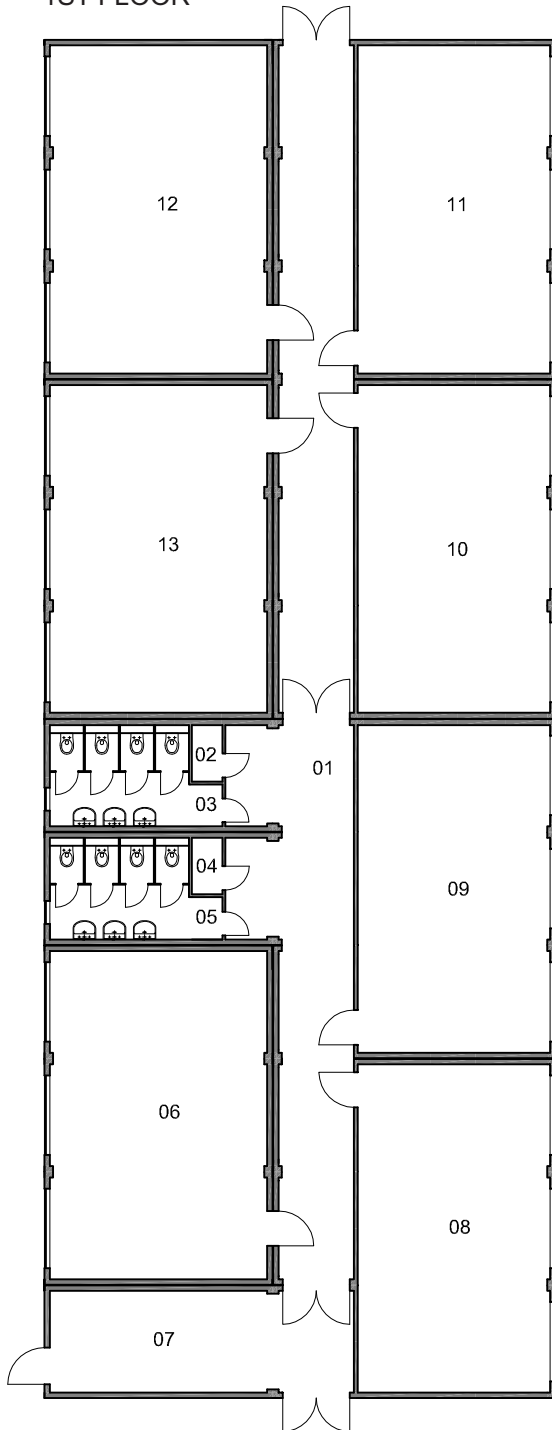
The two-storey school building provides space for 350 students in 14 classrooms. Each floor is equipped with sanitation facilities, a technical room, and a storeroom. The second floor is accessible by external stairs made from hot-dip galvanized steel.

For easy maintenance, the walls and partitions are sandwiched by melamine chipboard; the floor is covered with PVC. There is a hot water heating system. The whole modular building has been given a facade from horizontal corrugated steel sheets.

AVANS HOGESCHOOL UNIVERSITY

Site location	Onderwijsboulevard 215, 5223 DE s-Hertogenbosch, The Netherlands
Implementation date	August 2008
The delivery included:	-
The delivery didn't include:	-

1ST FLOOR

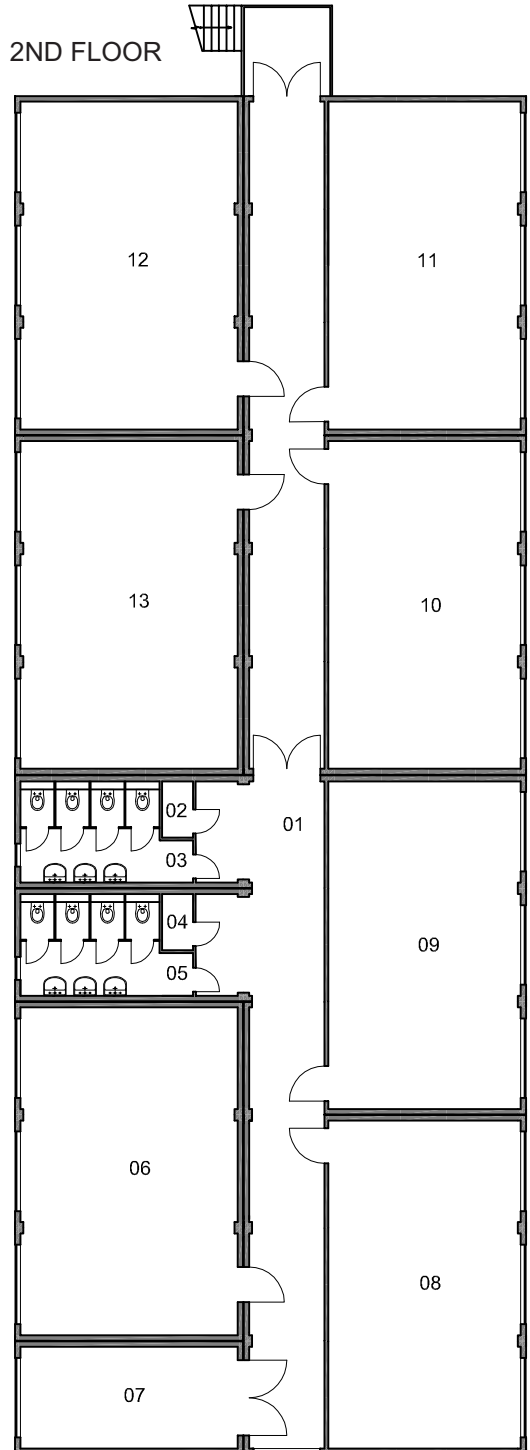


LEGEND - 1ST FLOOR

01	HALL
02	UTILITY ROOM
03	TOILETS
04	UTILITY ROOM
05	TOILETS

06	CLASSROOM
07	ENTRANCE
08	CLASSROOM
13	CLASSROOM

2ND FLOOR



LEGEND - 2ND FLOOR

01	HALL
02	UTILITY ROOM
03	TOILETS
04	UTILITY ROOM
05	TOILETS

06	CLASSROOM
07	STOREROOM
08	CLASSROOM
13	CLASSROOM

10m