



## TECHNICAL DESCRIPTION

Number of modules	19
Type of modules	ComfortLine, Light
Dimensions of modules	2pcs 7,500x3,300x3,315 mm 7pcs 9,000x3,300x3,315 mm 1pcs 7,500x3,290x3,315 mm 9pcs 9,000x3,290x3,995 mm
Area	541 m <sup>2</sup>
Internal height	2,608 mm
Length of manufacture	3 weeks
Length of assembly	8 weeks
Windows	Aluminium, double glazing, charcoal grey, external electric roll-up screens
External doors	Aluminium, double glazing, charcoal grey
Interior – walls	Gypsum fibreboard with painting, Waterproof wallpaper in sanitary rooms
Interior - floors	Gypsum fibreboards, PVC
Facade	Facade from expanded mesh, Glass façade, PUR panel
Heating	Hot water heating
Fire resistance	30 min., non-flammable construction system DP1
Equipment	Secondary pen roof, Gastro equipment, Ventilation and A/C system, Solar system

## Description

A new modular building designed by Chybik+Kristof Architectural Studio. Their design offers an elegant building interior solution in attractive colours reflecting the latest trends and creating a lush and pleasant impression.

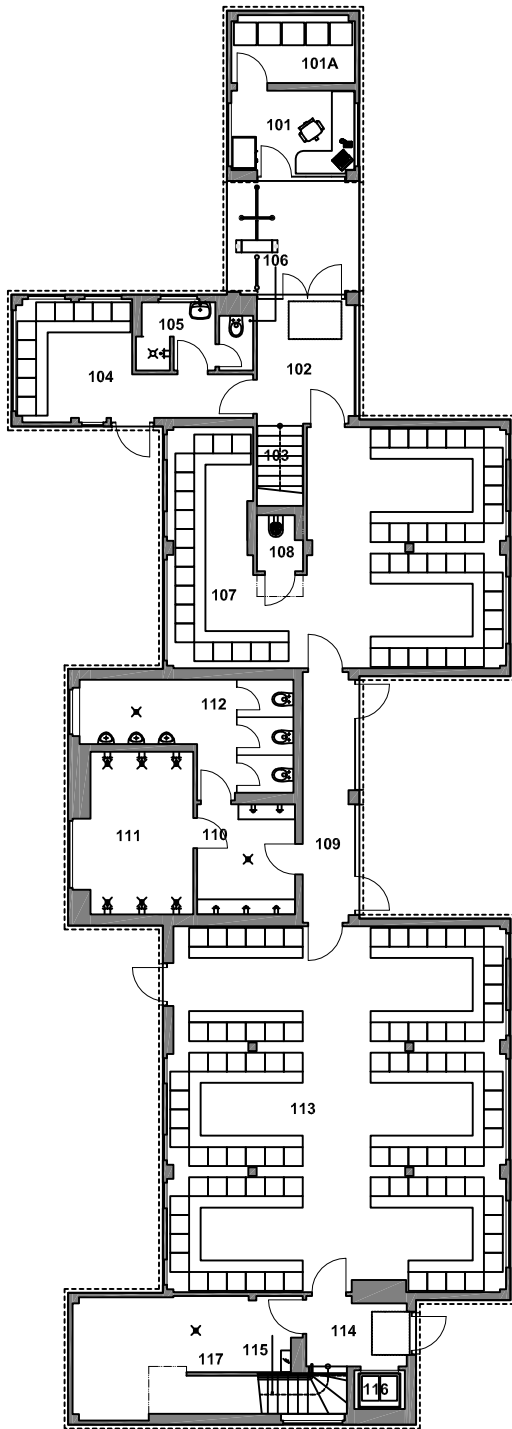
Thanks to the large windows, the building is well-lit. The exterior solution makes an attractive impression. It is not only an interesting mix of modules and terrace, but also an imaginative facade solution.

The building's water heating is handled with solar collectors and lavatories are flushed using rainwater.

## KOMA Factory Restaurant

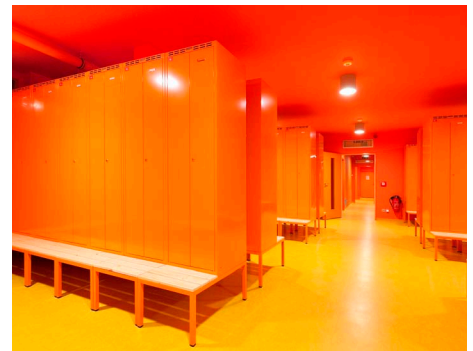
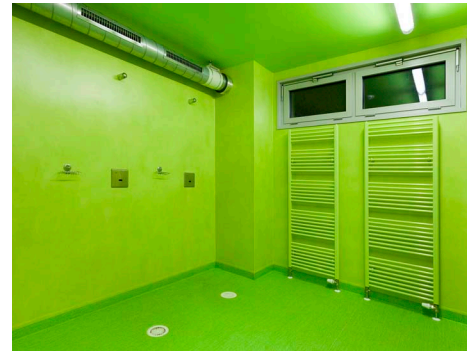
Site location	Říčanská 1191, Vizovice, Czech Republic
Implementation date	November 2013
The delivery included:	Supply of upper and lower building incl. utility lines.
The delivery didn't include:	-

1ST FLOOR



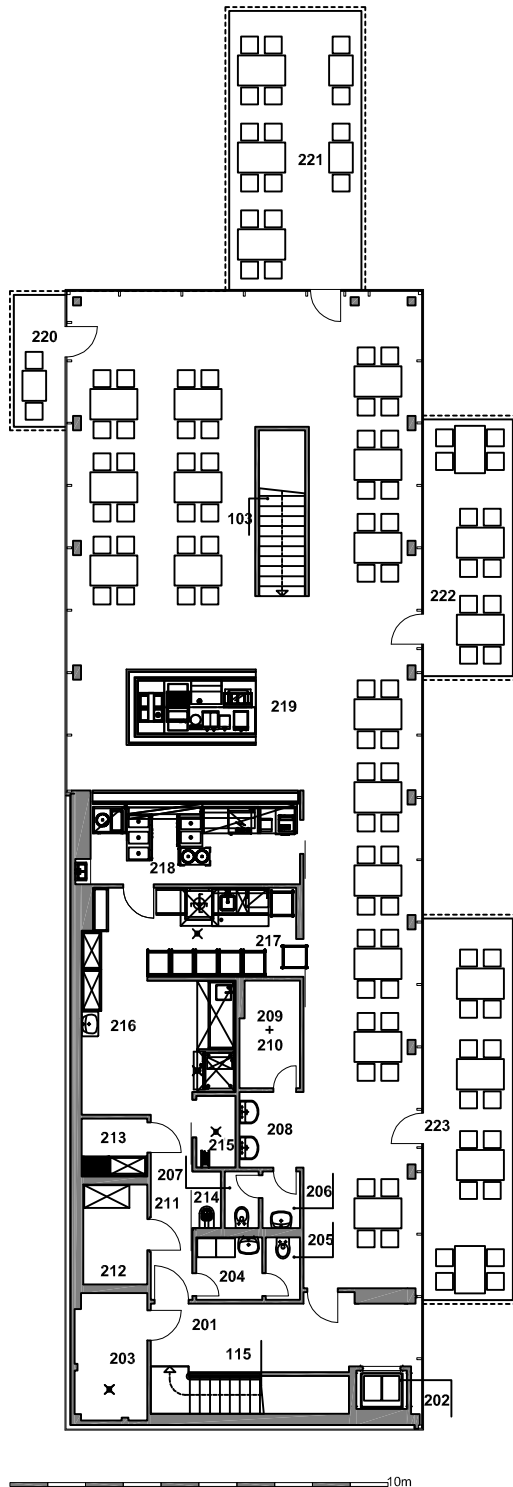
1ST FLOOR - LEGEND

101	GATEHOUSE
101A	SERVER ROOM
102	HALL
103	STAIRS
104	CHANGING ROOM - WOMEN
105	WASHROOM - WOMEN
106	WC - WOMEN
107	CHANGING ROOM - MEN
108	CLEANING ROOM
109	HALL
110	WASHROOM - MEN
111	SHOWER ROOM - MEN
112	WC - MEN
113	CHANGING ROOM - MEN
114	HALL WITH STAIRS
115	STAIRS
116	LIFT
117	A/C UTILITY ROOM





2ND FLOOR



2ND FLOOR - LEGEND

201	SUPPLY HALLWAY
202	LIFT
203	UTILITY ROOM
204	CHANGING ROOM - STAFF
205	WC - STAFF
206	LAVATORY ENTRY
207	WC
208	HALL
209	STOREROOM
210	STOREROOM
211	HALL
212	COOLER
213	STOREROOM
214	CLEANING ROOM
215	TRANSPORT PACKAGING CLEANING STATION
216	PREPARATION AREA
217	SCULLERY
218	MEAL DISTRIBUTION ROOM
219	DINING HALL
220	TERRACE
223	

