



TECHNICAL DESCRIPTION

Number of modules	82
Type of modules	StandardLine - flat/pack
Dimensions of modules	6,000x2,995x3,300 mm
Area	1,476 m ²
Internal height	2,930 mm
Length of manufacture	6 weeks
Length of assembly	6 weeks
Windows	Plastic frames, double glazing, external roll-up screens
External doors	Plastic frames, fully glazed, laminated safety glass
Interior – walls	Melamine chipboard
Interior - floors	PVC
Facade	Horizontal corrugated steel sheets
Heating	Air-conditioning
Fire resistance	-
Equipment	Internal staircase, external spiral staircase from metal sheet

Description

The administrative building of Rotterdam's Erasmus Hospital in the Netherlands consists of 82 modules, which were delivered to the site in a „flat/pack“ execution, i.e. in a folded state. As a result, costs and transport demands were significantly reduced and the 1,476 m² office building was assembled on site and, incredibly, only 12 weeks passed from the start of production to the handover of the building! Sheet metal cladding gives the building an interesting look, especially in the context of other buildings.

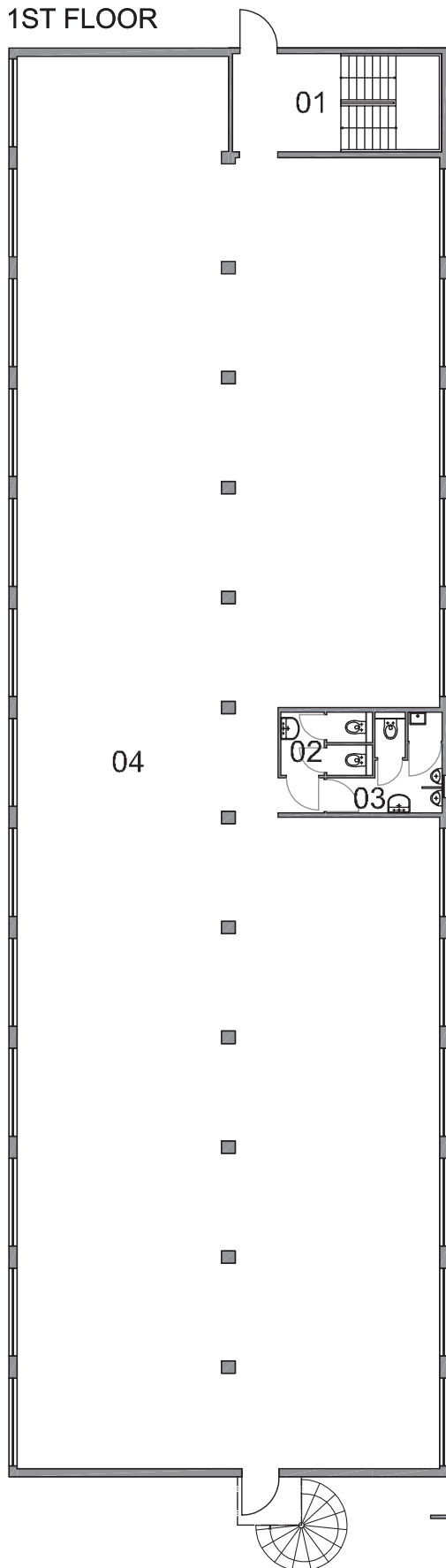
Hospital Administrative Building

Site location	Erasmus MC, Rotterdam The Netherlands
Implementation date	October 2009
The delivery included:	Supply of upper building.
The delivery didn't include:	Predecessor activities.

Hospital Administrative Building

KOMA

1ST FLOOR



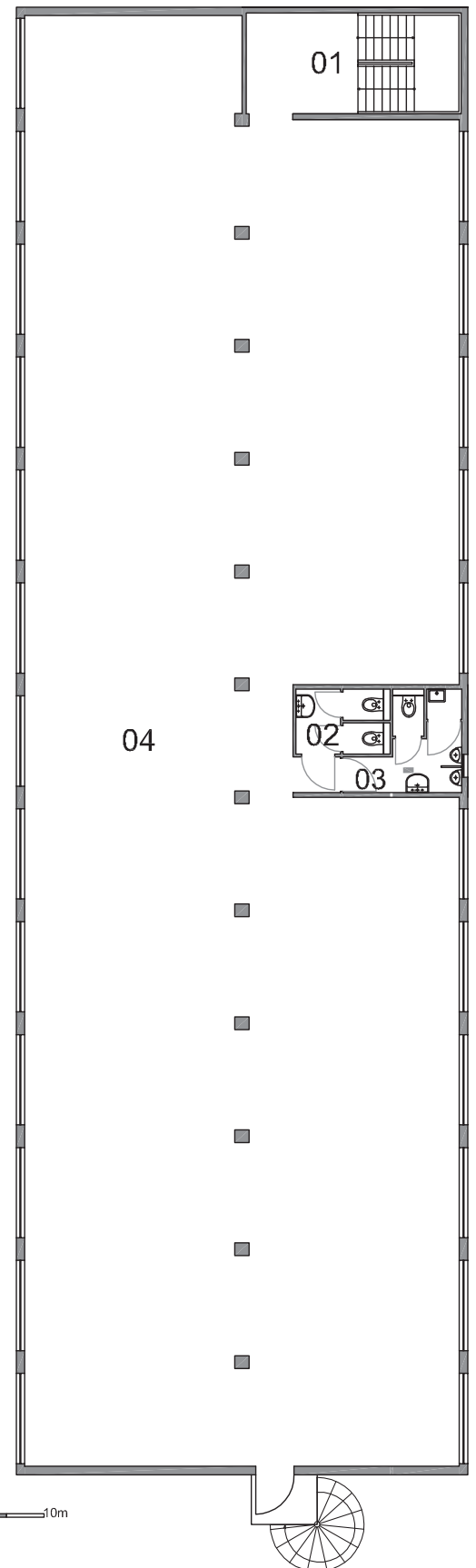
LEGEND - 1ST FLOOR

01	STAIRS
02	WC - WOMEN
03	WC - MEN
04	OFFICES

LEGEND - 3RD FLOOR

01	STAIRS
02	WC - WOMEN
03	WC - MEN
04	OFFICES

3RD FLOOR



10m

2ND FLOOR

