

## Description

A two-storey kindergarten with four classrooms built in three months according to a design by architect Tomáš Cendelín.

Each classroom, including bathrooms, is implemented in a different colour with its own meal distribution counter. The playroom is shared by all four classrooms. Meals are transported upstairs by means of a lift. The building is partially clad with quality wooden cladding and partially with coloured plaster with children's motifs.

## Views



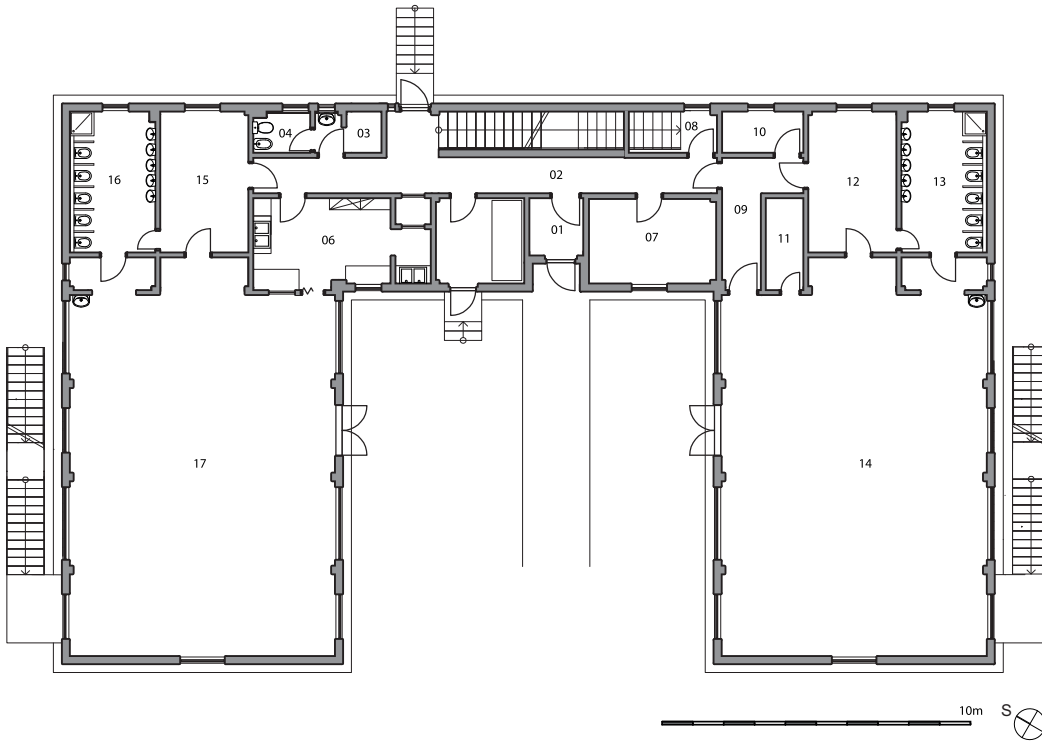
## TECHNICAL DESCRIPTION

Number of children	100
Number of classrooms	4
Number of modules	34
Type of modules	StandardLine
Area	792 m <sup>2</sup>
Internal height	3 m
Length of manufacture	5 weeks
Length of assembly	8 weeks
Windows	Plastic, double glazing, interior blinds
External doors	Plastic, double glazing
Interior – walls	Gypsum fibreboard with painting, ceramic tiles in the bathrooms
Interior - floors	PVC, tiles in bathrooms
Facade	Thermowood, plastered facade
Heating	Hot water heating, stations, electrical floor heating
Fire resistance	1F 45 min., 2F 30 min., non-flammable construction system DP1
Equipment	4 meal distribution rooms, one meal lift, a playroom

## MAŠINKA KINDERGARTEN

Site location	Demlova 34a, Jihlava, Czech Republic
Implementation date	August 2010
The delivery included:	Kindergarten building superstructure, including kitchen
The delivery didn't include:	Design and foundation

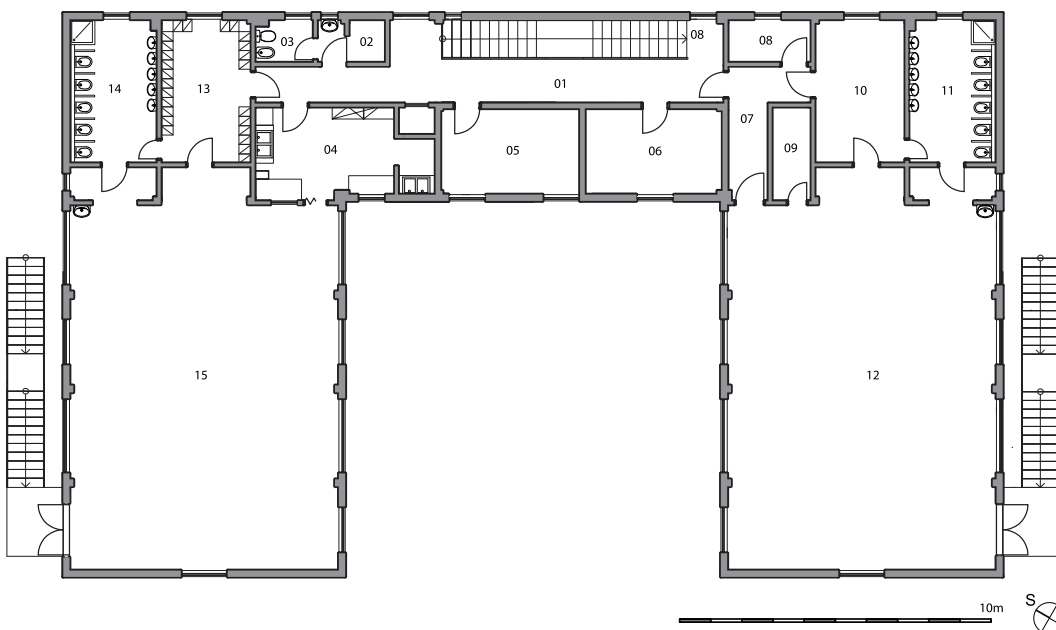
## 1ST FLOOR



1ST FLOOR - LEGEND:

01	LOBBY
02	HALL WITH STAIRS
03	UTILITY ROOM
04	TOILET
05	BOILER ROOM
06	MEAL DISTRIBUTION ROOM
07	OFFICE
08	LAUNDRY
09	HALL
10	OFFICE
11	PLACE FOR TOYS
12	CHANGING ROOM NR. 1
13	BATHROOM NR.1
14	PLAYROOM NR.1
15	CHANGING ROOM NR.2
16	BATHROOM NR.2
17	PLAYROOM NR.2

## 2ND FLOOR



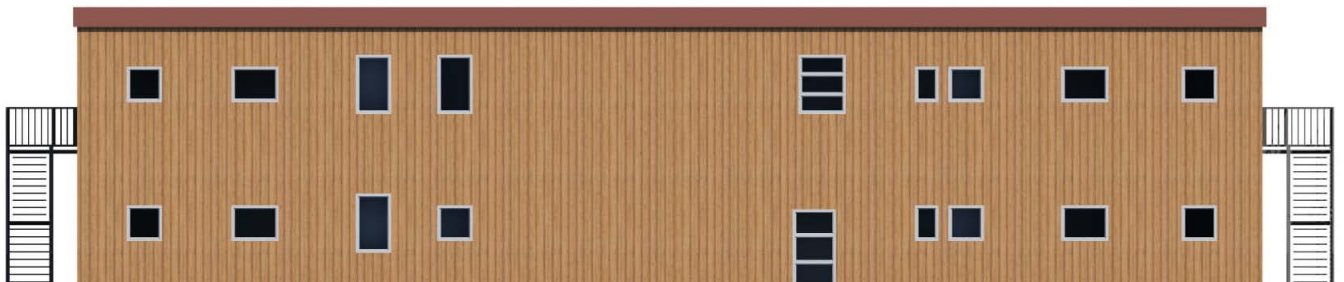
2ND FLOOR - LEGEND:

01	HALL WITH STAIRS
02	UTILITY ROOM
03	TOILET
04	MEAL DISTRIBUTION ROOM
05	CLASSROOM
06	CLASSROOM
07	HALL
08	OFFICE
09	PLACE FOR TOYS
10	CHANGING ROOM NR. 3
11	BATHROOM NR. 3
12	PLAYROOM NR.3
13	CHANGING ROOM NR.4
14	BATHROOM NR.4
15	PLAYROOM NR.4

## Front view



## Rear view



## Side views





# Kindergarten for 100 children

# KOMA

