

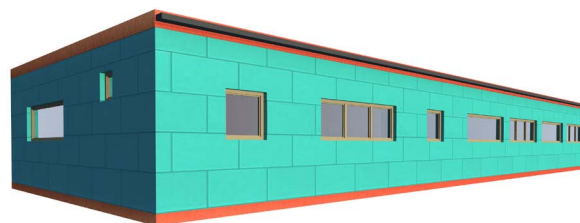
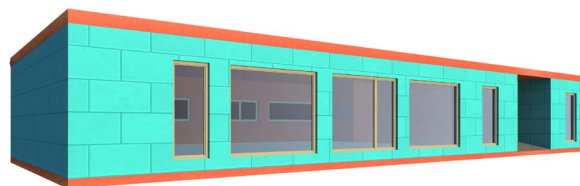


## Description

The Kindergarten consists of 7 large-format ComfortLine modules. These modules enable the creation of a large, open space and a playroom consisting of 4 modules. Thus, it offers a space of 130m<sup>2</sup> without columns.

An emphasis was placed on design and a luxurious look when selecting interior materials. Violet glass partitions and joyful facing were chosen for sanitary elements, and soft PVC for the playroom. The facade is made from PUR panels.

## Views



## TECHNICAL DESCRIPTION

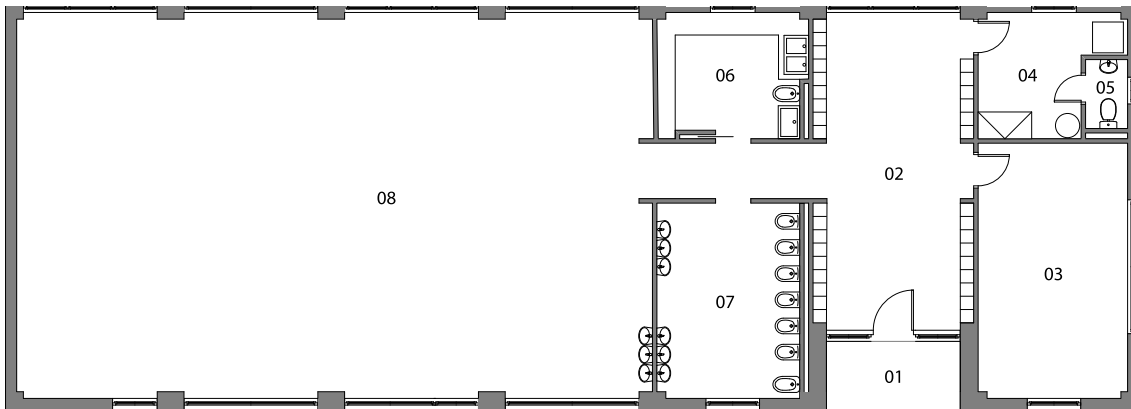
Number of children	28
Number of classrooms	1
Number of modules	7
Type of modules	ComfortLine
Area	227 m <sup>2</sup>
Internal height	2,7 m
Length of manufacture	4 weeks
Length of assembly	3 weeks
Windows	Aluminium, triple glazing, external electric blinds
External doors	Aluminium, triple glazing
Interior – walls	Gypsum fibreboard with painting, ceramic tiles
Interior - floors	PVC, tiles in bathrooms
Facade	PUR panel
Heating	Electrical floor heating, air-conditioning, heating ladder in the sanitary part
Fire resistance	30 min. non-flammable construction system DP1
Equipment	Kitchen, design sanitary partitions

## KINDERCITY KINDERGARTEN

Site location	Olomoucká č. 805, Brno, Czech Republic
Implementation date	December 2012
The delivery included:	Kindergarten building superstructure
The delivery didn't include:	-

# Kindergarten for 28 children

# KOMA



LEGEND

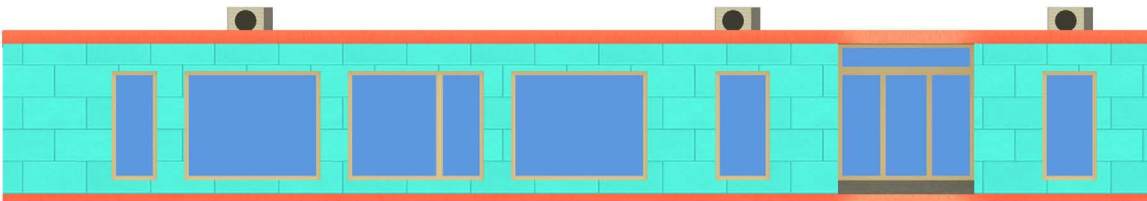
01	PORCH
02	HALL
03	OFFICE
04	CHANGING ROOM
05	TOILET
06	KITCHEN
07	BATHROOM
08	PLAYROOM

10m

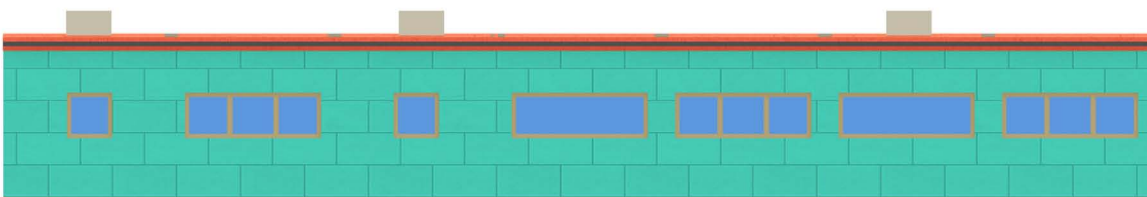
S



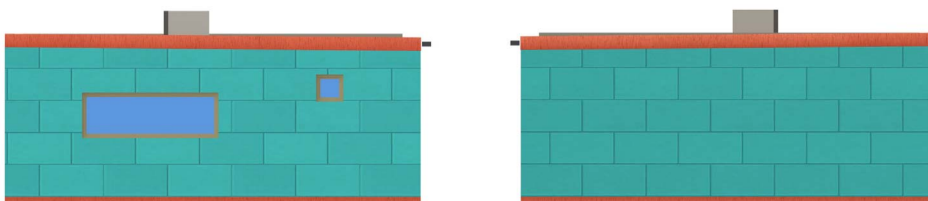
## Front view



## Rear view



## Side views



# Kindergarten for 28 children

# KOMA

