

## Description

The single-storey Oskárek company kindergarten is the first low-energy building assembled from the large ComfortLine modules. The kindergarten includes two classrooms for preschool education (for 16 children each) and one classroom for 10 children under the age of three.

The kindergarten was built according to the architectural design of Petr Stibor, and the interior was designed by Vladimíra Bukvicová and supplied by Benjamín.

## Views



## TECHNICAL DESCRIPTION

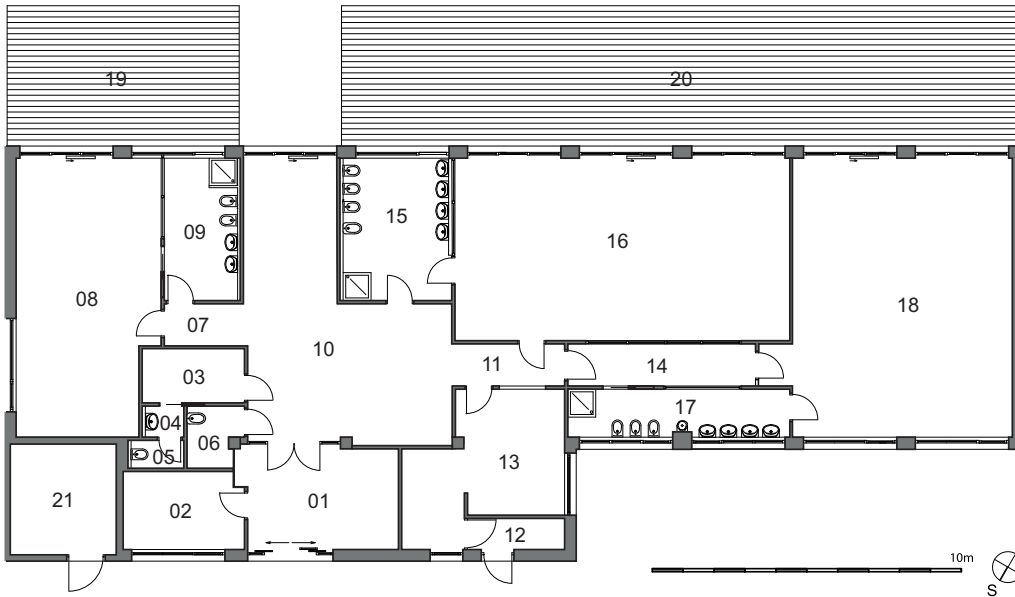
Number of children	42
Number of classrooms	3
Number of modules	12 + 1
Type of modules	ComfortLine
Area	368 + 34 m <sup>2</sup>
Internal height	3 m
Length of manufacture	5 weeks
Length of assembly	5 weeks
Windows	Aluminium, double glazing, exterior blinds, shelters
External doors	Aluminium, with double glazing
Interior – walls	Gypsum fibreboard with painting, ceramic tiles in the bathrooms
Interior - floors	PVC, tiles in bathrooms
Facade	PUR panel, Alucobond aluminium cassettes
Heating	Hot water floor heating, air-conditioning
Fire resistance	15 min., mixed construction system DP2
Equipment	Solar panels for hot water heating, a summer house, a kitchen and a terrace

## OSKÁREK KINDERGARTEN

Site location	Street Nádražní, Otrokovice, Czech Republic
Implementation date	September 2013
The delivery included:	Kindergarten building, foundations, a playground, a summer house and kitchen
The delivery didn't include:	Design

# Kindergarten for 42 children

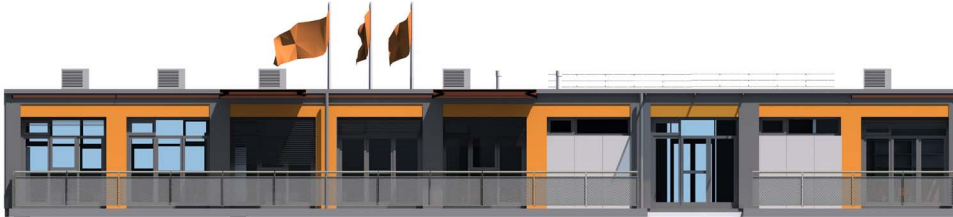
# KOMA



LEGEND:

01	LOBBY
02	OFFICE
03	CHANGING ROOM FOR EMPLOYEES
04	WASHROOM FOR EMPLOYEES
05	TOILET FOR EMPLOYEES
06	UTILITY ROOM
07	HALL
08	CHILDREN'S CORNER
09	BATHROOM NR.1
10	CHANGING ROOM, HALL
11	LOBBY
12	HALL
13	KITCHEN
14	HALL
15	BATHROOM NR.1
16	PLAYROOM NR.1
17	BATHROOM NR.2
18	PLAYROOM NR.2
19	TERRACE
20	TERRACE
21	UTILITY ROOM

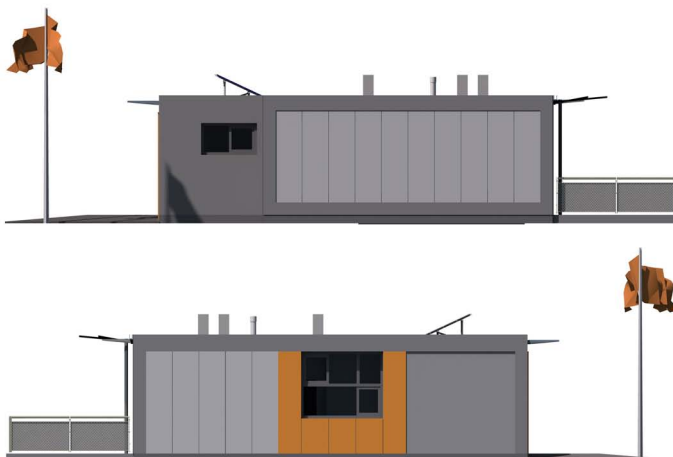
## Front view



## Rear view



## Side views



# Kindergarten for 42 children

# KOMA

