



TECHNICAL DESCRIPTION

Number of children	28
Number of classrooms	1
Number of modules	7
Type of modules	ComfortLine
Area	227 m ²
Internal height	2,7 m
Length of manufacture	4 weeks
Length of assembly	3 weeks
Windows	Aluminium, triple glazing, external electric blinds
External doors	Aluminium, triple glazing
Interior – walls	Gypsum fibreboard with painting, ceramic tiles
Interior - floors	PVC, tiles in bathrooms
Facade	PIR panel
Heating	Electrical floor heating, air-conditioning, heating ladder in the sanitary part
Fire resistance	30 min. non-flammable construction system DP1
Equipment	Kitchen, design sanitary partitions

Description

The kindergarten consists of 7 modules with dimensions of 9,000 x 3,600 mm and a clear height of 2,700 mm. This one-classroom kindergarten is equipped with its own kitchen, a changing room, a barrier-free social facility, a playroom, and an office for teachers.

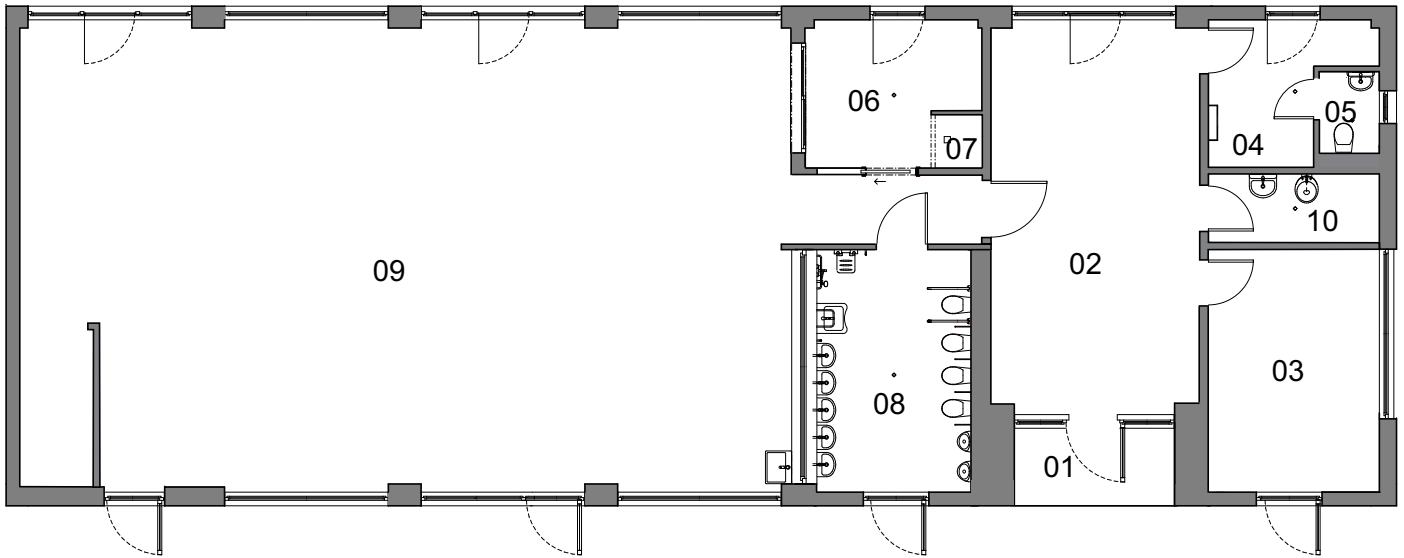
The facade of the building is from white PIR panels; the windows are fitted with Venetian blinds. The interior is heated by in-floor heating and the whole building is air-conditioned. The realization of this project, including its foundations and utility lines, took 4 months. The modular kindergarten is barrier-free.

TEDDY BEAR KINDERGARTEN

Site location	U Bečvy 2297, Vsetín, Czech Republic
Implementation date	July 2017
The delivery included:	Building of kindergarten, service connections, a rainwater drainage well, and a new access pavement.
The delivery didn't include:	-

Kindergarten for 28 children

KOMA



LEGEND

01	PORCH	06	KITCHEN
02	HALL	07	STOREROOM
03	OFFICE	08	WASHROOM
04	CHANGING-ROOM	09	PLAYROOM
05	TOILET	10	UTILITY ROOM

