



## Description

A single-classroom single-storey kindergarten for 25 children made of 9 StandardLine modules. The container appearance of the building was preserved during construction and the facade was made of painted zinc-coated sheetmetal.

Heating provided by a water heating system and a gas boiler. The bathrooms are clad with ceramic tiles and the other rooms are clad with gypsum board with wall painting.

The kindergarten complies with the requirement for DP2 fire resistance for 15 minutes.

## Views



## TECHNICAL DESCRIPTION

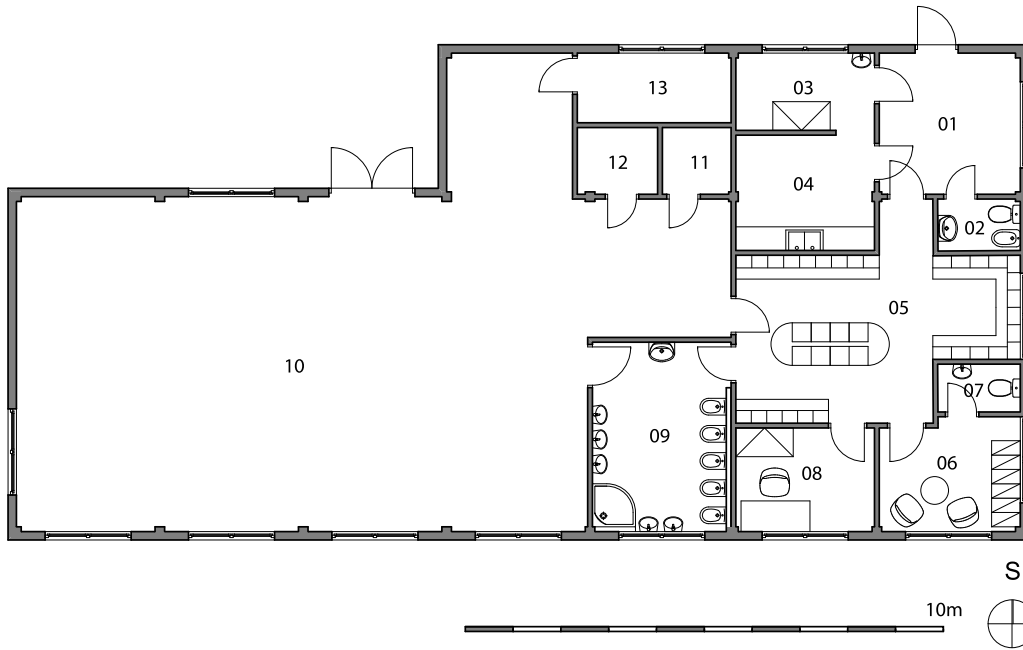
Number of children	25
Number of classrooms	1
Number of modules	9
Type of modules	StandardLine
Area	193,5 m <sup>2</sup>
Internal height	3 m
Length of manufacture	2 weeks
Length of assembly	3 weeks
Windows	Plastic, double glazing, interior blinds
External doors	Plastic, double glazing
Interior – walls	Gypsum board with painting, ceramic tiles in the bathrooms
Interior - floors	PVC, tiles in the bathrooms
Facade	Painted zinc-coated sheetmetal
Heating	Hot water heating with a gas boiler
Fire resistance	15 min., mixed construction system DP2
Equipment	Meal distribution counter

## ORÍSEK KINERGARTEN

Site location	Ořešín 57, Brno, Czech Republic
Implementation date	August 2011
The delivery included:	Kindergarten superstructure, connections, foundation
The delivery didn't include:	Design

# Kindergarten for 25 children

# KOMA



LEGEND:

1	LOBBY
2	TOILET + UTILITY ROOM
3	KITCHEN FACILITIES
4	MEAL DISTRIBUTION ROOM
5	CHANGING ROOM
6	CHANGING ROOM-TEACHERS
7	TOILET-TEACHERS
8	OFFICE
9	BATHROOM
10	PLAYROOM
11	BEDCLOTHES STOREROOM
12	BEDCLOTHES STOREROOM
13	FOLDING BED STOREROOM

Front view



Rear view



Side views



# Kindergarten for 25 children

# KOMA

