



## TECHNICAL DESCRIPTION

Number of modules	6
Type of modules	StandardLine
Dimensions of modules	6,058x2,990x2,880 mm
Area	108 m <sup>2</sup>
Internal height	2.510 m
Length of manufacture	1 week
Length of assembly	1 week
Windows	Plastic frames, double glazing, interior blinds
External doors	ZK
Interior – walls	Melamine chipboard
Interior - floors	Heavy-duty carpet / PVC
Facade	Horizontal corrugated steel sheets / Painted zinc-coated sheetmetal
Heating	Electric heaters
Fire resistance	-
Equipment	Internal spiral staircase from metal sheet, oak tread boards, attic parapet

## Description

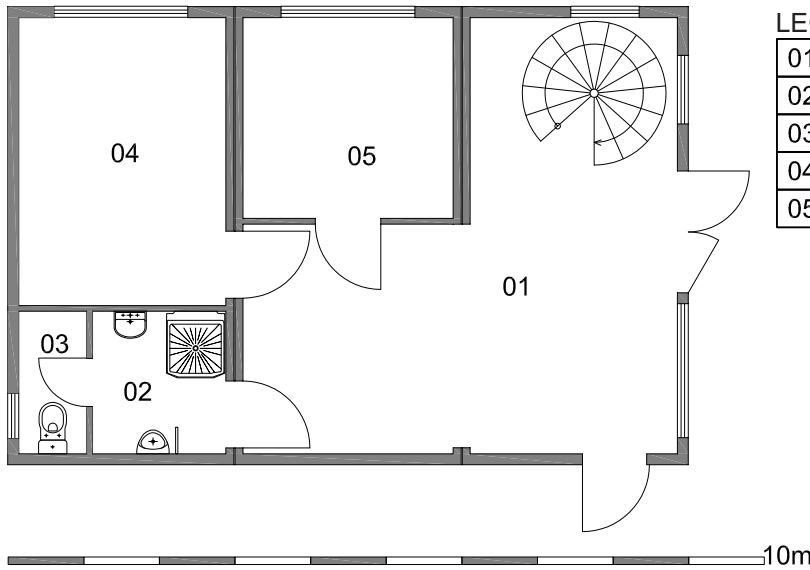
A modular building part assembled from six StandardLine modules as the administrative building of a transport company. An assembled hall is linked to an office. The facade is made from horizontal corrugated sheets on the face side.

On the rear side, the standard container look was preserved. The installation included office equipment with a heavy-duty carpet and a metal spiral staircase with oak tread boards.

## MASTER TRUCK Headquarters

Site location	Doubská 573, Liberec - Doubí, Czech Republic
Implementation date	October 2009
The delivery included:	Turn-key supply of upper structure.
The delivery didn't include:	Preliminary construction work and supply of assembled hall.

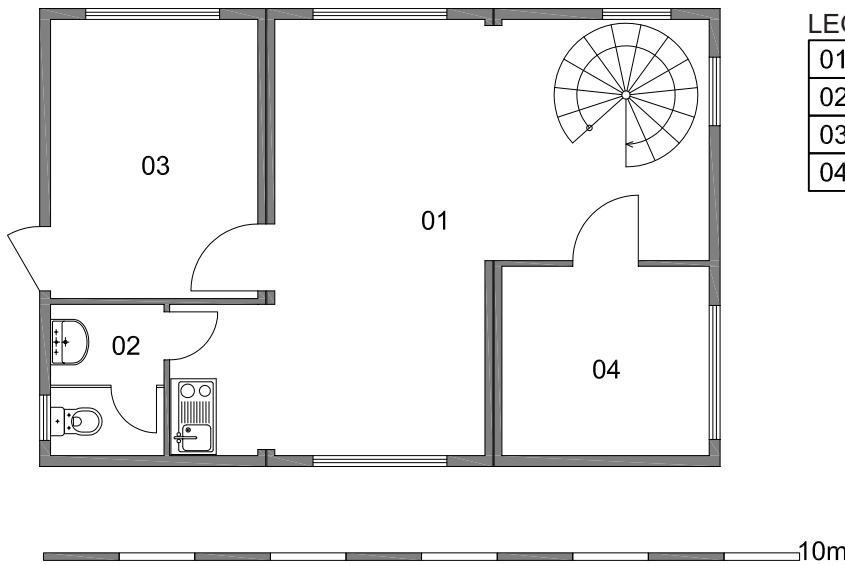
## 1ST FLOOR



### LEGEND - 1ST FLOOR

01	ENTRANCE+STAIRS
02	WASHROOM
03	WC
04	OFFICE
05	OFFICE

## 2ND FLOOR



### LEGEND - 2ND FLOOR

01	KITCHEN+STAIRS
02	WC
03	OFFICE
04	OFFICE

