



TECHNICAL DESCRIPTION

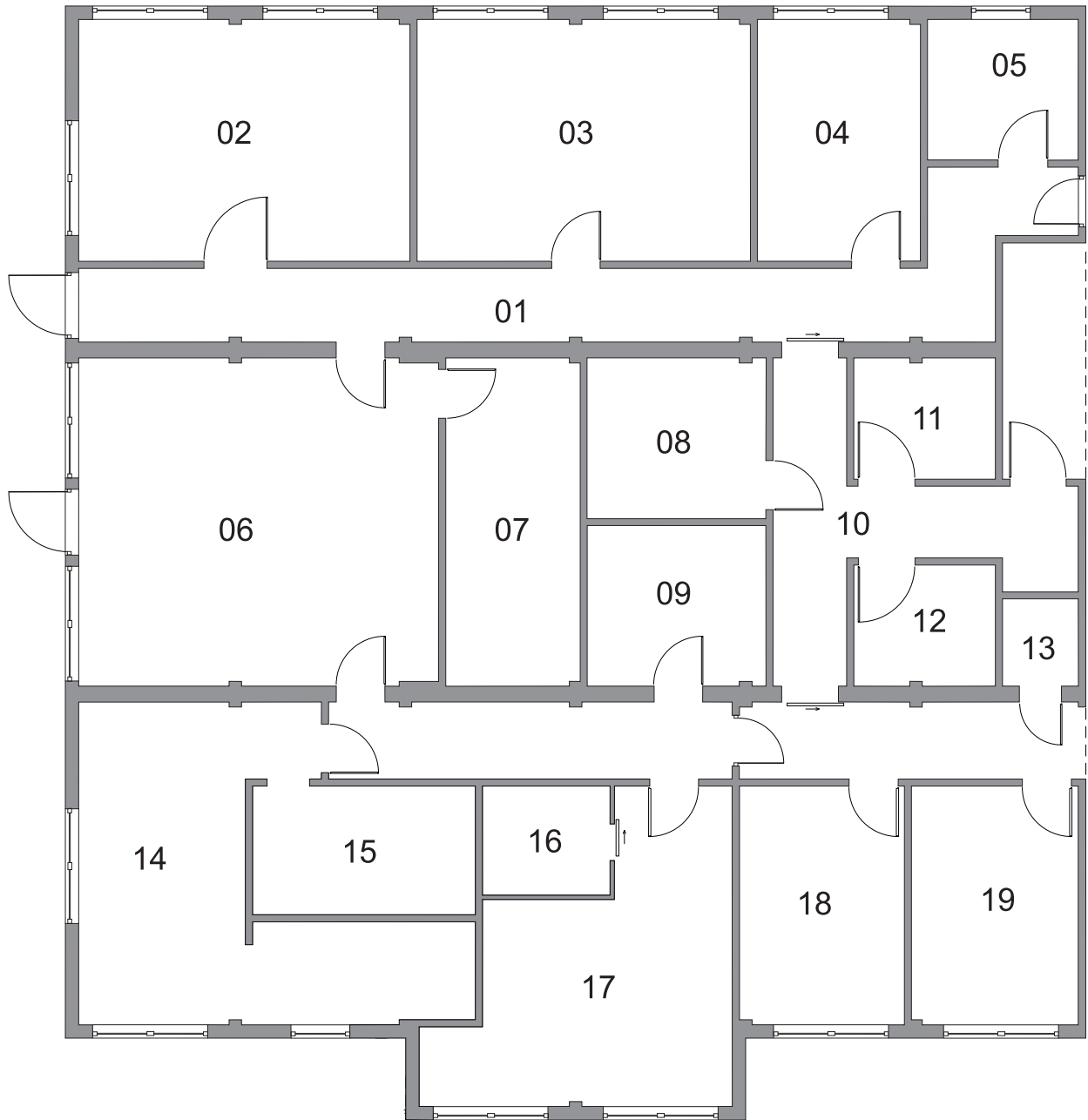
Number of modules	18
Type of modules	StandardLine
Dimensions of modules	6,058x2,990x3,340 mm 7,500x2,990x3,340 mm
Area	336 m ²
Internal height	2,860 mm
Length of manufacture	1 week
Length of assembly	2 weeks
Windows	Plastic frames, double glazing, external electric blinds
External doors	Aluminium frames, fully glazed, laminated safety glass
Interior – walls	Gypsum boards with wallpaper and painting, suspended ceiling from mineral boards
Interior - floors	PVC
Facade	Plastered facade
Heating	-
Fire resistance	30 min. non-flammable construction system DP1
Equipment	-

Description

The modular single-storey extension of a private dental clinic is built from 18 StandardLine series modules. The existing clinic has thus expanded to include 4 consulting rooms, a department for day-surgery, a recovery room for children after anaesthesia, rooms for dental prosthetics, laboratories and doctors' offices. The modules are equipped with an insulation system and plaster. Flooring, lighting, heating and sanitary items were not included in the delivery.

Private Dental Clinic

Site location	GINIS - Zahnärzte & Partner, Lindenweg 3, Geseke, Germany
Implementation date	October 2017
The delivery included:	Supply of upper building.
The delivery didn't include:	Sanitary equipment, lights, heating, flooring, connections, foundation.



LEGEND

01	HALL	08	UTILITY ROOM	15	DENTAL IMPRESSIONS ROOM
02	CONSULTING ROOM	09	LABORATORY EQUIPMENT	16	CHANGING ROOM
03	CONSULTING ROOM	10	HALL	17	OFFICE
04	CONSULTING ROOM	11	RECOVERY ROOM	18	OFFICE
05	OFFICE	12	RECOVERY ROOM	19	CONSULTING ROOM
06	WAITING ROOM	13	STOREROOM		
07	CHANGING ROOM	14	LABORATORY		