



TECHNICAL DESCRIPTION

Number of children	100
Number of classrooms	4
Number of modules	28
Type of modules	StandardLine
Area	442 m ²
Internal height	2.500 mm
Length of manufacture	2 weeks
Length of assembly	2 weeks
Windows	Aluminium shop windows, double glazing, exterior blinds
External doors	Aluminium, double glazing, fully glazed
Interior – walls	Gypsum boards with wallpaper or painting, melamine chipboards, sanitary partitions
Interior - floors	PVC
Facade	Painted zinc-coated sheetmetal
Heating	Hot water heating
Fire resistance	F30 B
Equipment	Internal staircase - wooden stairs, banister from stainless steel, glass porch with aluminium structure, secondary roof

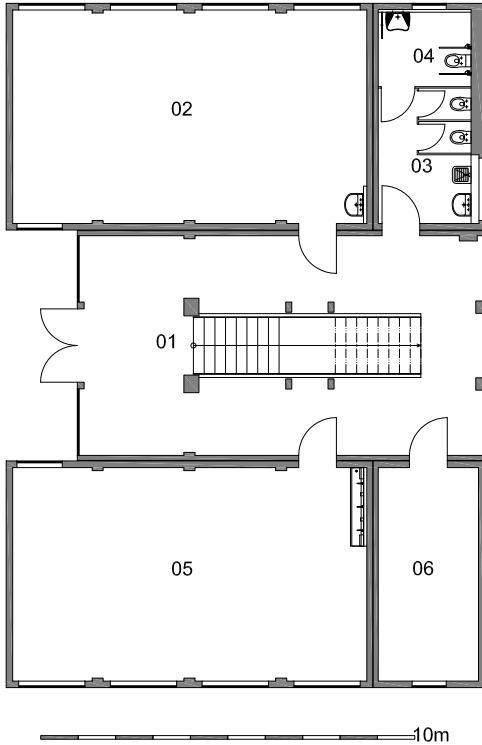
Description

The two-storey school building provides space for 100 students. On each floor, there are two classrooms, a teachers' office, and a social facility. On the 1st floor there is also a barrier-free lavatory, technical rooms, and a janitor's room. The building entry is barrier-free as well. The entry to the 1st floor is constructed with a wooden staircase and stainless-steel banisters. The entry doors and shop windows are made of aluminium; the windows made made of wood and aluminium with external aluminium roll-up shutters. The hot-water heating system was provided by the customer. A porch with an aluminium frame and a secondary roof was included in the delivery. The building's facade was made with standard corrugated sheets.

SCHOOL OF CREATIVE ARTS

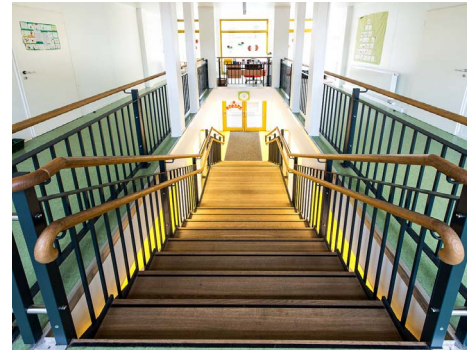
Site location	Hadesdorf, Hauptstraße 70, Vienna, Austria
Implementation date	August 2009
The delivery included:	Upper building
The delivery didn't include:	Predecessor activities and heating

1ST FLOOR

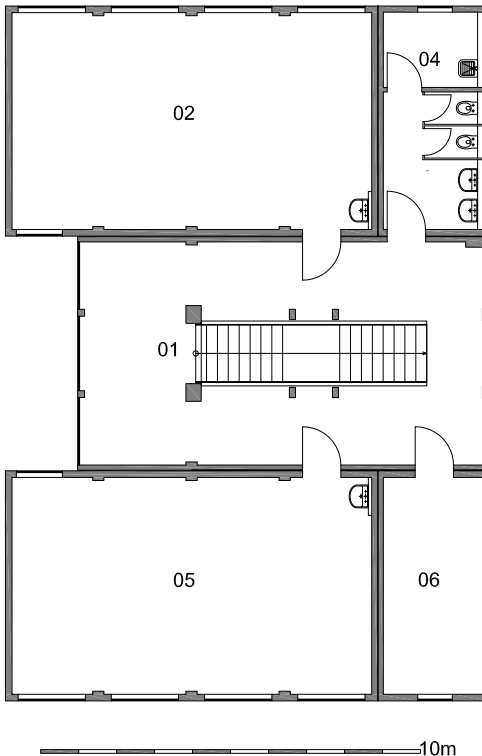


LEGEND - 1ST FLOOR

01	HALL AND STAIRS
02	CLASSROOM
03	TOILETS
04	TOILETS - DISABLED
05	CLASSROOM
06	OFFICE



2ND FLOOR



LEGEND - 2ND FLOOR

01	HALL AND STAIRS
02	CLASSROOM
03	TOILETS
04	CLEANING ROOM
05	CLASSROOM
06	OFFICE

