



TECHNICAL DESCRIPTION - 1 house

Number of modules	18
Type of modules	StandardLine
Dimensions of modules	6,058x2,990x2,840 mm
Area	324 m ²
Internal height	2,510 mm
Length of manufacture	2 weeks
Length of assembly	1,5 weeks
Windows	Plastic frames, double glazing
External doors	MZ
Interior – walls	Melamine chipboard, gypsum boards with wallpaper and painting, SIMONA tiling and board in sanitary area
Interior - floors	PVC, tiles in bathrooms
Facade	Painted zinc-coated sheetmetal
Heating	Hot water heating
Fire resistance	30 min., non-flammable construction system DP1
Equipment	External zinc coated steel staircase with gallery, secondary roof

Description

11 dwelling units in Hamburg provide accommodation for nearly 40 families of socially disadvantaged citizens and refugees.

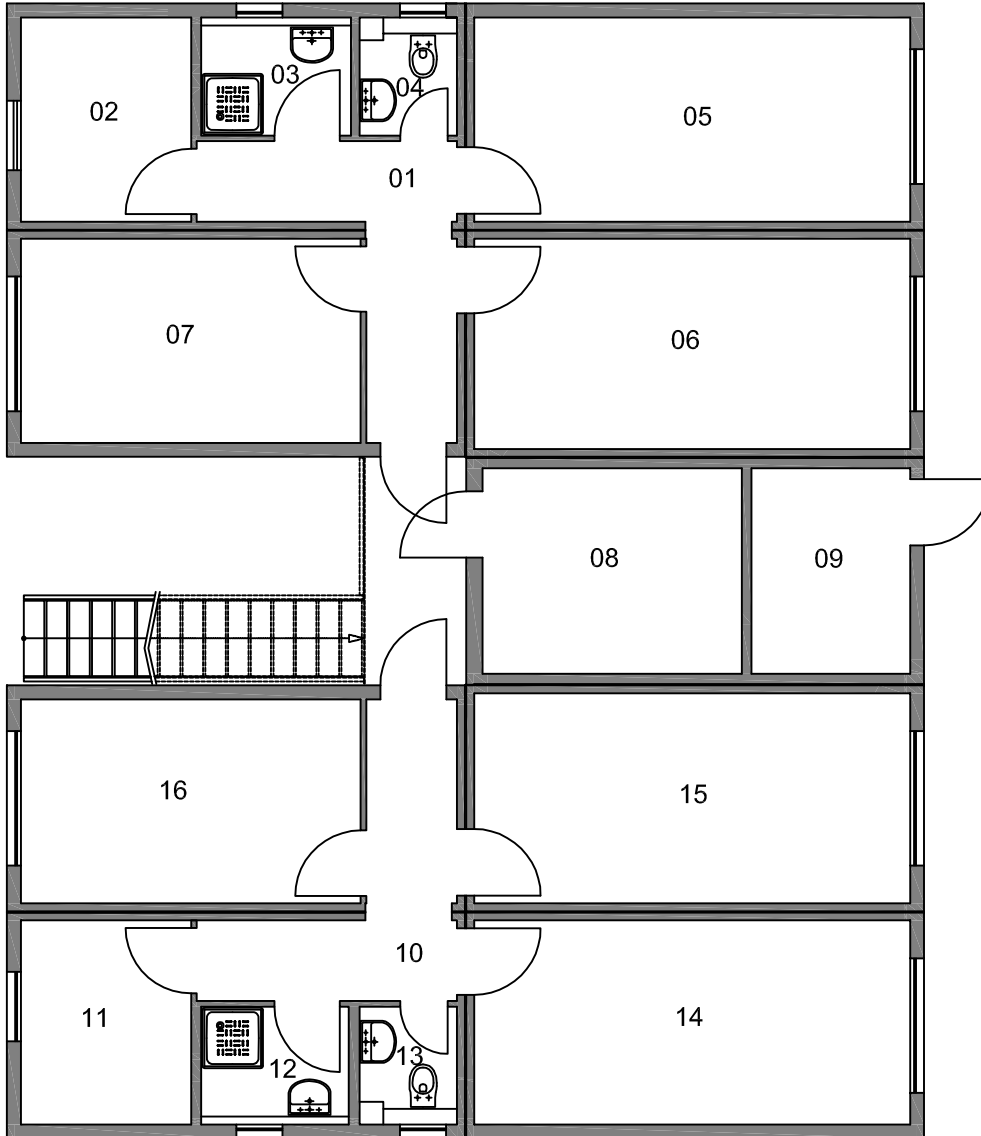
There are 4 flats in each of the nine buildings; there are always three flats in two units, as well as a laundry room and a social room. Each flat is equipped with its own bathroom, social facilities, a kitchen and two or three rooms.

The container homes are fitted with a secondary double sloping roof.

Social Dwelling Units in Hamburg

Site location	Curslacke Neuer Deich 78/80, Hamburg, Germany
Implementation date	August 2012
The delivery included:	Supply of an upper building - 1 dwelling unit.
The delivery didn't include:	Preliminary construction work, secondary roof and heating.

1ST FLOOR



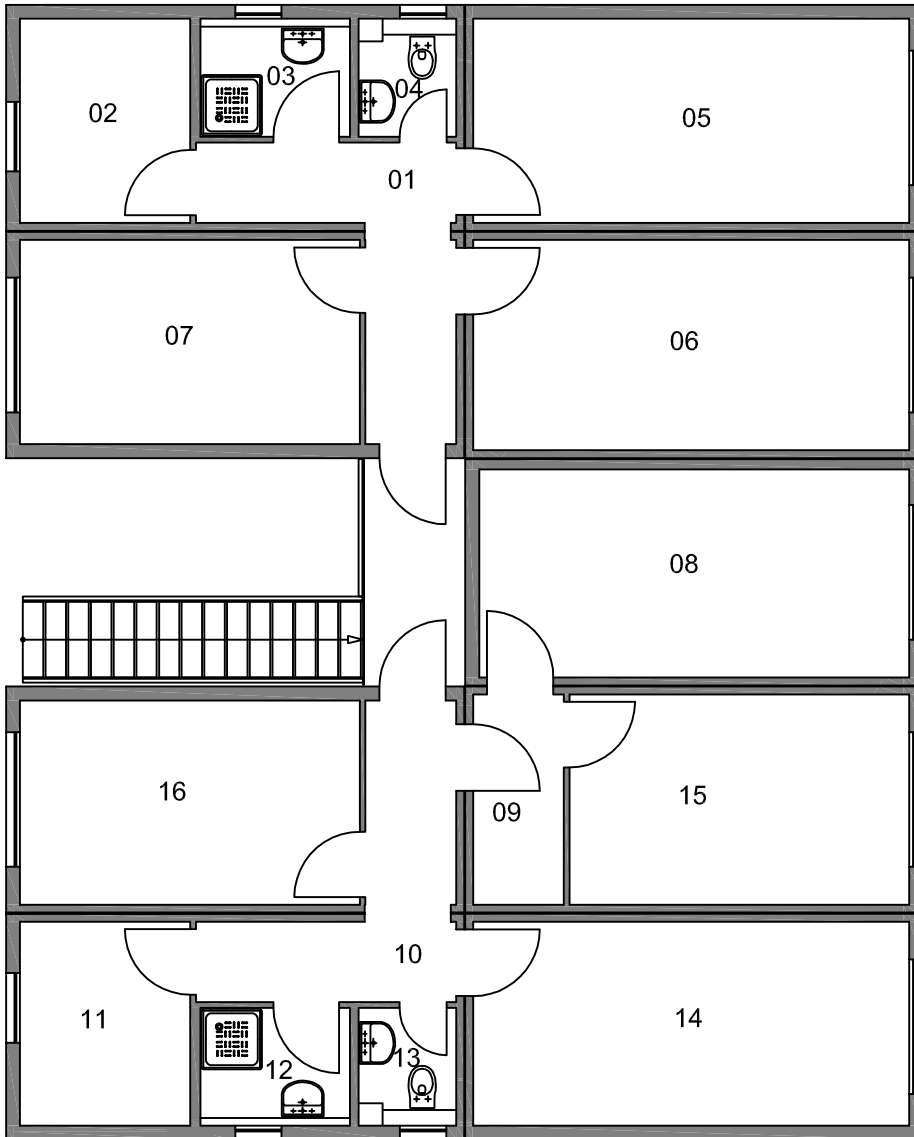
LEGEND - 1ST FLOOR

01	HALL
02	KITCHEN
03	BATHROOM
04	WC
05	ROOM
06	ROOM
07	ROOM
08	UTILITY ROOM
09	CLEANING ROOM
10	HALL
11	KITCHEN
12	BATHROOM
13	WC
14	ROOM
15	ROOM
16	ROOM

10m



2ND FLOOR



LEGEND - 2ND FLOOR

01	HALL
02	KITCHEN
03	BATHROOM
04	WC
05	ROOM
06	ROOM
07	ROOM
08	ROOM
09	HALL
10	HALL
11	KITCHEN
12	BATHROOM
13	WC
14	ROOM
15	ROOM
16	ROOM

