



TECHNICAL DESCRIPTION

Number of modules	4
Type of modules	StandardLine
Dimensions of modules	9.000x2.990x3.160 mm
Area	108 m ²
Internal height	2.710 mm
Length of manufacture	1 day
Length of assembly	1 week
Windows	Plastic frames, double glazing, laminated safety glass, internal vertical roll-up shutters
External doors	Plastic frames, double glazing, laminated safety glass / MZ doors
Interior – walls	Gypsum fibreboard with painting, washable painting
Interior - floors	PVC
Facade	Debond façade
Heating	Electric heaters
Fire resistance	30 min., DP3 flammable construction system
Equipment	Cleaning zone at the entrance, kitchen

Description

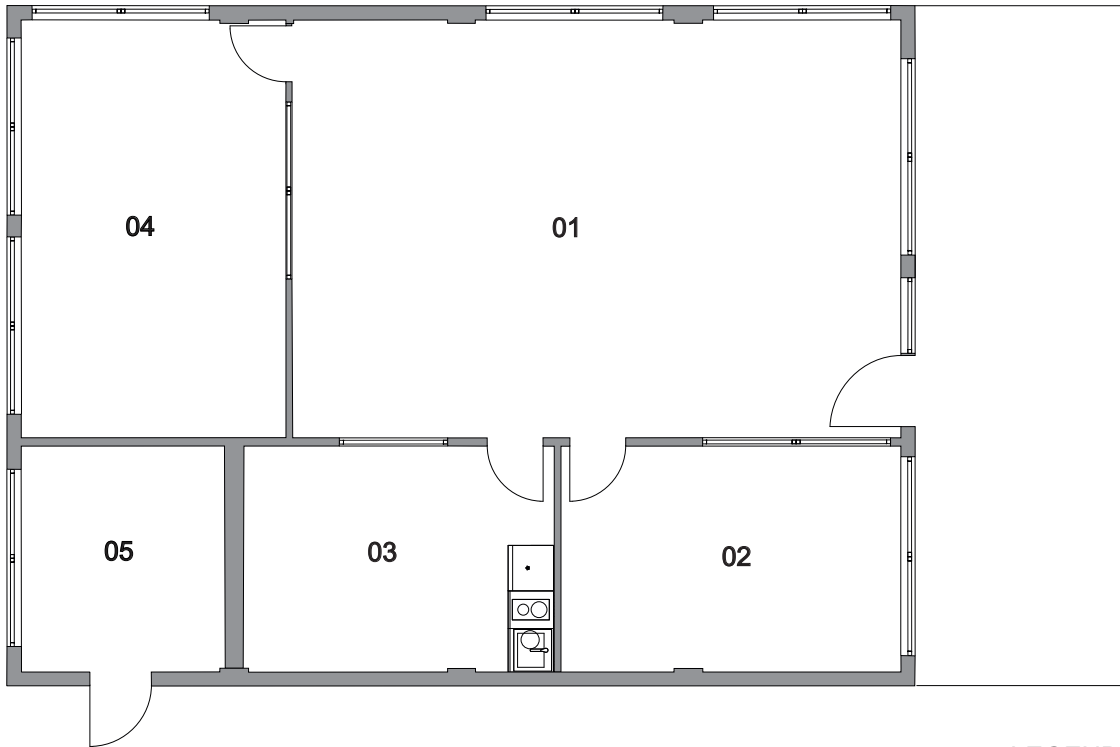
A modular administrative building for the TROTINA Used Car Mart in Smiřice offers a space of 108m² assembled from 4 StandardLine modules.

The building is covered with a grey Debond system facade and a secondary roof that overhangs at the front and, thus, forms an entry cover and, together with an illuminated sign, is the distinguishing feature of the building.

The floor is covered with heavy-duty wood déco PVC; the walls coated in white paint.

TROTINA Used Car Mart

Site location	Smiřice, Czech Republic
Implementation date	April 2016
The delivery included:	Supply of upper building.
The delivery didn't include:	Predecessor activities.



LEGEND

01	SALES AREA
02	OFFICE
03	MANAGER OFFICE
04	MEETING ROOM
05	STORE ROOM

