



## TECHNICAL DESCRIPTION

Number of children	150
Number of classrooms	6
Number of modules	26
Type of modules	StandardLine
Area	624 m <sup>2</sup>
Internal height	2.500 mm
Length of manufacture	2 weeks
Length of assembly	2 weeks
Windows	Plastic frames, double glazing, with external roll-up screens
External doors	Aluminium, fully glazed, laminated safety glass, ZK, MZ doors
Interior – walls	Melamine chipboard, ceramic tiles in bathrooms
Interior - floors	PVC
Facade	Painted zinc-coated sheetmetal
Heating	This was not in the scope of supply.
Fire resistance	30 min. in certain parts
Equipment	Internal staircase - wooden stairs

## Description

The temporary school in Geneva, Switzerland, was built from housing and sanitary modules with a premium heating system. 4 classrooms on the ground floor and 2 classrooms on the 1st floor provide space for 150 students. Each floor has the required social facilities. The staircase is wooden, the classroom and lavatory floors are covered in PVC. The walls and partitions are made from laminated chipboard, the sanitary facility has a tiled surface. The building has been covered with facade constructed from standard corrugated sheets. If need be, the assembly enables easy dismantling and transport to another location.

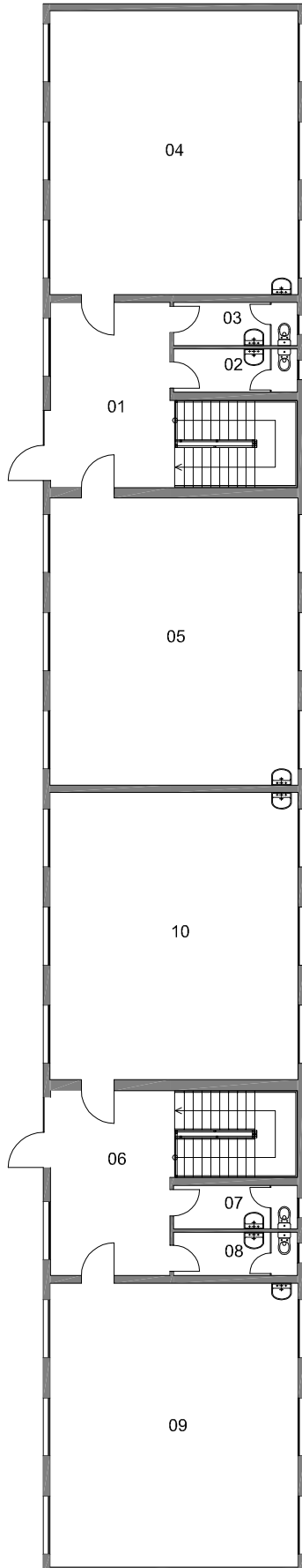
## TEMPORARY SCHOOL IN GENEVA

Site location	Rude du Village, Geneva, Switzerland
Implementation date	August 2010
The delivery included:	Upper building
The delivery didn't include:	Predecessor activities and heating

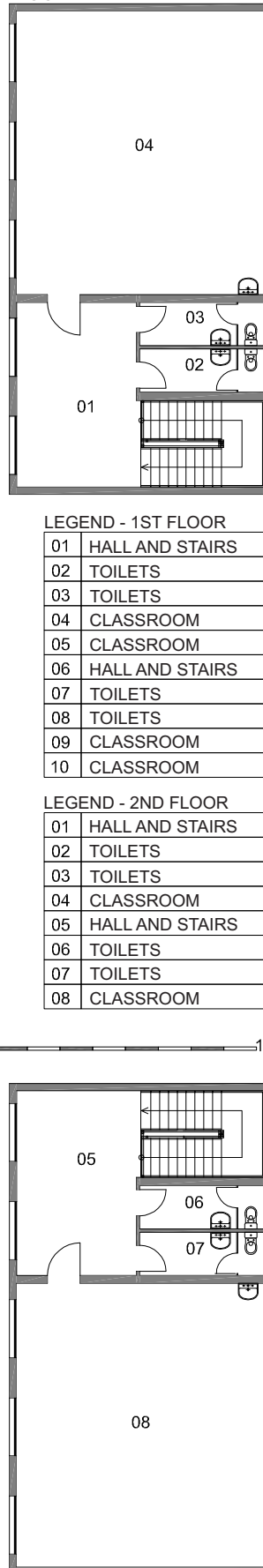
# Temporary School in Geneva

# KOMA

1ST FLOOR



2ND FLOOR



LEGEND - 1ST FLOOR

01	HALL AND STAIRS
02	TOILETS
03	TOILETS
04	CLASSROOM
05	CLASSROOM
06	HALL AND STAIRS
07	TOILETS
08	TOILETS
09	CLASSROOM
10	CLASSROOM

LEGEND - 2ND FLOOR

01	HALL AND STAIRS
02	TOILETS
03	TOILETS
04	CLASSROOM
05	HALL AND STAIRS
06	TOILETS
07	TOILETS
08	CLASSROOM

10m

