

Water Ski Park Auxiliary Rooms

KOMA



TECHNICAL DESCRIPTION

Number of modules	6
Type of modules	StandardLine
Dimensions of modules	8,000x2,438x3,060 mm
Area	120 m ²
Internal height	2,610 mm
Length of manufacture	2 weeks
Length of assembly	1 week
Windows	Plastic frames, double glazing
External doors	Plastic frames, double glazing, Fully glazed
Interior – walls	Melamine chipboard
Interior - floors	PVC
Facade	Thermowood wooden facade
Heating	Electric heaters
Fire resistance	30 min, DP3 flammable construction system
Equipment	-

Description

Water ski auxiliary rooms in a camp in Pasohlávky - Nové Mlýny are assembled from 6 StandardLine modules. This modular building has a total area of 120 m²; it is fitted with wooden Thermowood facade and it serves as a fast food canteen, shop, office, and storeroom for water skis or changing rooms with cabins.

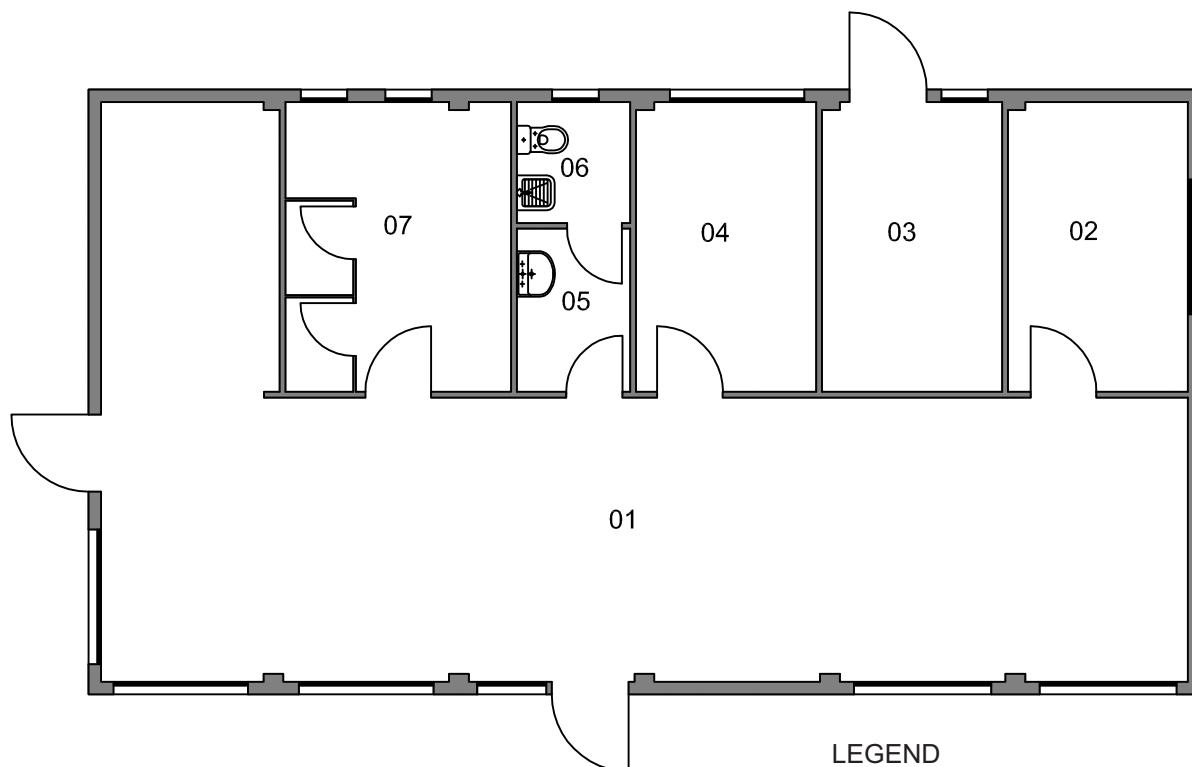
The modules were produced in two weeks and assembled in a mere 3 days including wooden facing.

Water Ski Park Auxiliary Rooms

Site location	Nové Mlýny, Camp Merkur, Czech Republic
Implementation date	June 2013
The delivery included:	Turn-key supply of upper structure
The delivery didn't include:	Predecessor activities

Water Ski Park Auxiliary Rooms

KOMA



10m

LEGEND

01	SHOP
02	REFRESHMENT ROOM
03	WATER SKI STOCKROOM
04	OFFICE
05	WASHROOM
06	TOILET
07	CHANGING ROOMS

